



Quick Reference Guide

Explosion protection by WAROM



WAROM TECHNOLOGY INCORPORATED COMPANY



Brief introduction

Warom Technology Incorporated Company is the leading enterprise of Chinese explosion-proof industry with a registered capital of 41.5 million USD, located in Jiading District of Shanghai, China. The company specializes in manufacturing explosion-proof lighting fixtures, and explosion-proof apparatus for industrial, mining, marine and offshore areas. In addition, the company produces special portable lighting, waterproof and dustproof light fittings and apparatus, elevators, and floor building material. Warom Technology is currently the executive member unit of China Electrical Apparatus Industrial Association, and the Vice President member Unit of China Explosion-Proof Electrical Apparatus Association. In addition, Warom Technology is the member unit of various professional organizations, including China Ship Association, China Quality Association, and Shanghai Chamber of Import and Export Trade.

Aiming to create a world brand, Warom Technology has organized a technical force with great strength; there are over 500 technical talents within the team. Warom Technology manufactures products that are representing the most advanced level in terms of quality and technical standards in China. The key technical indexes of explosion-proof performance, waterproof performance, and anti-corrosive performance of its exporting products are compliant to international requirements. The company has acquired intellectual property right of all its products, and has obtained Chinese and international patent certificates. And the Warom trademark has been registered in more than 30 countries and regions.

The industrial park established by Warom Technology in Shanghai is the largest explosion-proof apparatus production base in China, and it is also one of the top five largest explosion-proof mass production bases in the world. It facilitates with advanced equipments with the best build-in technical process; it has a well structured quality assurance system, and it is managed by international standards, quality guarantee system and international management system.

★ Warom Shanghai Industrial Park is currently the largest explosion-proof electrical equipments manufacturing base in the industry with the most advanced facilities and the best equipment condition and the processes and equipments have achieved full automation or semi. The park covers an area of over 150,000 square meters with modern workshop of 220,000 square meters and more than 2,000 workers.

★ Warom has established the only one CNAS certified laboratory in the explosion-proof industry with a large number of advanced testing and control equipments from materials to performance, electricity to optics, and electrical safety to electromagnetic safety, etc.

★ ISO9001 Quality Management System, ISO10012 Measurement Management System, ISO14001 Environmental Management System and OHSAS 18001 Occupational Health and Safety Management System certified; and the products have been obtained ATEX and IECEx certificates from internationally renowned laboratories such as PTB of Germany, LCIE of France, Nemko and DNV of Norway, Eurofins of Italy, and other certificates like UL and CU-TR of Russia, Belarus and Kazakhstan, PESO of India and INMETRO of Brazil etc..

Warom's products have been widely used in various industries including Oil and Gas, Chemical, Aerospace, Coal, Electric Power, Railway, Metallurgy, Marine, Security, Fire Protection, Irrigation, City Planning, Telecom and Diving Rescue. The products are sold to 31 provinces in China and to over 50 countries in the world. The Company has become a reliable supplier and cooperative partner to many renowned petrochemical companies. As one of the two explosion-proof equipment manufacturers in IECEx Mark Committees, Warom has gained strong brand recognition with various awards including "Famous-brand Product", "Famous Trademark", "AAA Credit Rating Company", and "The Credible Enterprise" etc..

Warom is advancing toward the world! Warom is creating a world brand of explosion protection!

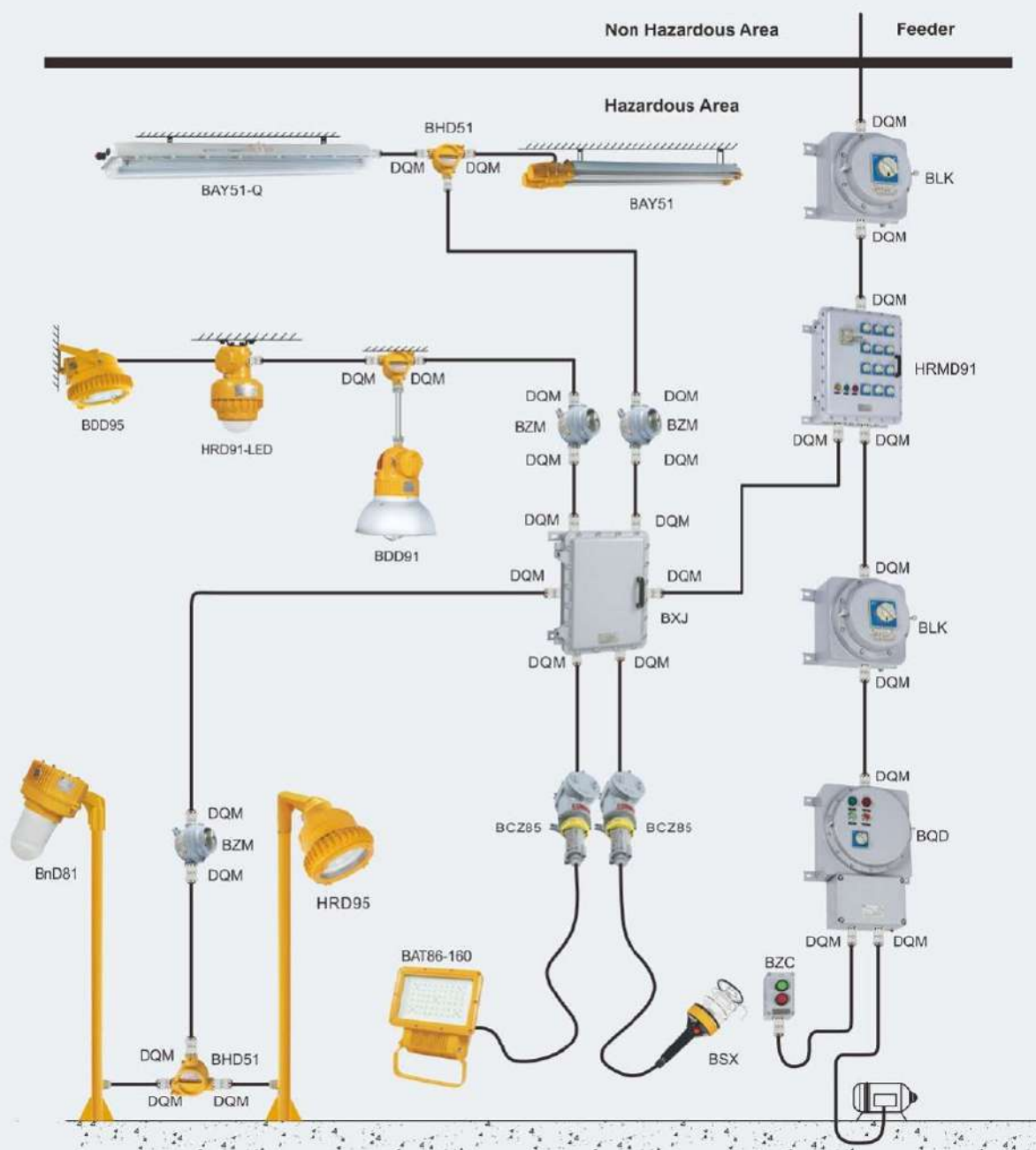
"Let Warom's Product Speak for itself!"

"Let Product Ensure User's Safety!"



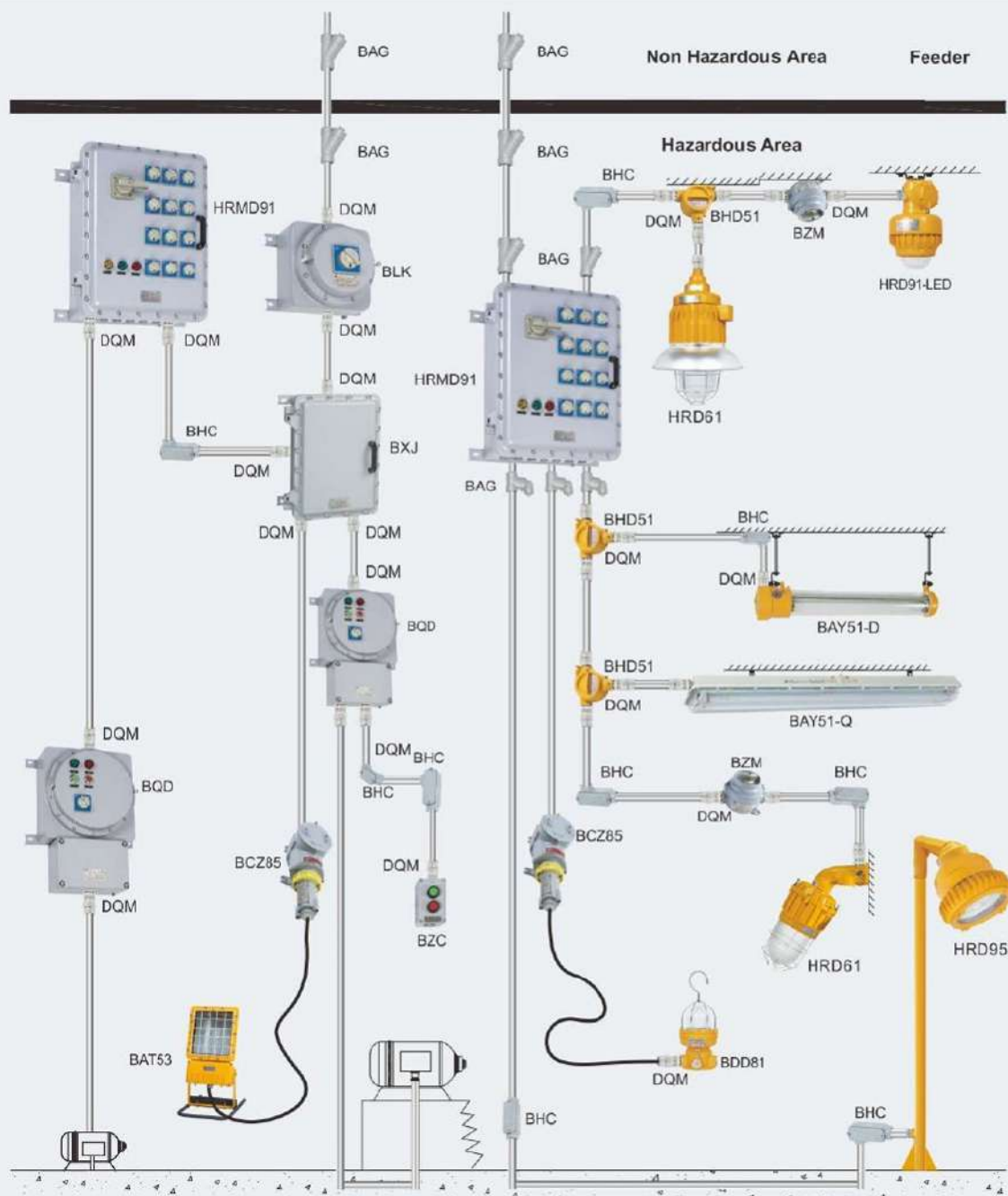
Schematic Diagram of Field Installation

The drawing simulates installed explosion-proof equipment with cable wiring on site, meeting IEC 60079 and NEC505 standards. It is designed as reference for user to select and install explosion-proof equipment.



Schematic Diagram of Field Installation

The drawing simulates installed explosion-proof equipment with steel pipe wiring on site, meeting IEC 60079 and NEC505 standards. It is designed as reference for user to select and install explosion-proof equipment.



EXPLOSION-PROOF LIGHT FITTINGS FOR FLUORESCENT LAMP



BAY51-Q

- ◆ Ex e enclosure with explosion-proof components inside.
- ◆ Safety interlock between enclosure and diffuser, switches off on opening.
- ◆ Emergency unit with protections against overcharge and over-discharge.
- ◆ End of lamp life (EOL) rectification effect protection.

Zones 1&2; 21&22

Explosion protection

Global (IECEX)
Ex d e q IIC T4 Gb
Ex t IIIC T80°C Db IP66
Europe (ATEX)
Ex II 2 G Ex d e q IIC T4 Gb

Ex II 2 D Ex t IIIC T80°C Db IP66

Certificates: IECEX; ATEX; CU-TR; INMETRO

Material

Enclosure: GRP; Diffuser: Polycarbonate

Lamp

Lamp specification: T8 tube

Lamp power (W):

36W x 2	18W x 2
36W x 1	18W x 1

Degree of protection: IP66, IP67(optional)



EXPLOSION-PROOF LIGHT FITTINGS WITH LED TUBES



BAY51-Q LED

- ◆ Ex e enclosure with explosion-proof components inside.
- ◆ Built-in LED driver, wide voltage input, CC-CV (constant current-constant voltage) output, power factor ≥ 0.95 .
- ◆ Emergency unit with protections against overcharge and over-discharge.

Zones 1&2; 21&22

Explosion protection

Global (IECEX)
Ex db eb IIC T6 Gb
Ex db eb q IIC T5 or T6 Gb
Ex tb IIIC T80°C Db IP66
Europe (ATEX)
Ex II 2 G Ex db eb IIC T6 Gb
Ex II 2 G Ex db eb q IIC T5 or T6 Gb
Ex II 2 D Ex tb IIIC T80°C Db IP66

Certificates: IECEX; ATEX; CU-TR

Material

Enclosure: GRP; Diffuser: Polycarbonate

Lamp

Lamp specification: LED module

Lamp power (W):

9W x 1, 18W x 1, 9W x 2, 18W x 2
(LED lamp and driving power are integrated type)
14W x 1, 28W x 1, 14W x 2, 28W x 2
(LED lamp and driving power are split type)

Degree of protection: IP66, IP67(optional)



EXPLOSION-PROOF LIGHT FITTINGS FOR FLUORESCENT LAMP



BAY51

- ◆ Built-in electronic ballast, wide voltage input, rapid starting, stable performance, power factor ≥ 0.95 .
- ◆ Built-in LED driver, wide voltage input, CC-CV (constant current-constant voltage) output, power factor ≥ 0.95 .
- ◆ End of lamp life (EOL) rectification effect protection.

Zones 1&2; 21&22

Explosion protection

Global (IECEX)
Ex d IIC T6 Gb
Ex t IIIC T80°C Db IP66
Europe (ATEX)
Ex II 2 G Ex d IIC T6 Gb
Ex II 2 D Ex tb IIIC T80°C Gb IP66

Certificates: IECEX; ATEX; CU-TR

Material

Enclosure: Copper-free aluminium alloy
Glass tube: Toughened glass

Lamp

Lamp specification: T8 tube/LED module

Lamp power (W):

T8: 18W x 1, 18W x 2, 36W x 1, 36W x 2, 58W x 1, 58W x 2
LED: 9W x 1, 9W x 2, 18W x 1, 18W x 2, 28W x 1, 28W x 2

Degree of protection: IP66, IP67(optional)



EXPLOSION-PROOF LIGHT FITTINGS FOR FLUORESCENT LAMP



BAY51-D

- ◆ Built-in electronic ballast, wide voltage input, rapid starting, stable performance, power factor ≥ 0.95 .
- ◆ Built-in LED driver, wide voltage input, CC-CV (constant current - constant voltage) output, power factor ≥ 0.95 .
- ◆ End of lamp life (EOL) rectification effect protection.
- ◆ Emergency functions are available on request.

Explosion protection

Global (IECEX)
Ex db IIB T6 Gb
Ex db IIB+H₂ T6 Gb
Ex tb IIIC T80°C Db IP66
Europe (ATEX)

Ex II 2 G Ex db IIB T6 Gb

Ex II 2 G Ex db IIB+H₂ T6 Gb

Ex II 2 D Ex tb IIIC T80°C Db IP66

Certificates: IECEX; ATEX; CU-TR

Material

Enclosure: Copper-free aluminium alloy

Glass tube: Toughened glass

Lamp

Lamp specification: T8 fluorescent lamp /

T5 fluorescent lamp / LED module

Lamp power (W):

T8: 18Wx2, 36Wx2, 58Wx2

T5: 14Wx2, 28Wx2, 35Wx2

LED: 9Wx2, 18Wx2, 28Wx2

Degree of protection: IP66, IP67(optional)



Zones 1&2; 21&22

EXPLOSION-PROOF LIGHT FITTINGS



HR92-LED

- ◆ Built-in LED driver, wide voltage input, CC-CV (constant current - constant voltage) output, power factor ≥ 0.95 .
- ◆ End of lamp life (EOL) rectification effect protection.
- ◆ Emergency functions are available on request.

Explosion protection

Global (IECEX)(applied for)

Ex db IIC T6 Gb

Ex tb IIIC T80°C Db IP66

Europe (ATEX)(applied for)

Ex II 2 G Ex db IIC T6 Gb

Ex II 2 D Ex tb IIIC T80°C Db IP66

Certificates: IECEX; ATEX; CU-TR

Material

Enclosure: Copper-free aluminium alloy

Glass tube: Toughened glass

Lamp

Lamp specification: LED module

Lamp power (W): 20W, 40W, 60W

Degree of protection: IP66, IP67(optional)



Zones 1&2; 21&22

EXPLOSION-PROOF LIGHT FITTINGS FOR FLUORESCENT LAMP



HR952

- ◆ T8 Fluorescent Lamps:
Built-in electromagnetic ballast (Electronic ballast is optional, please specify when ordering).
- ◆ LED lamps:
Built-in LED driver, wide voltage input, CC-CV(constant current-constant voltage) output, power factor ≥ 0.95 .

Explosion protection

PCEC (China)

Ex II 2 G Ex d IIC T6 Gb

Ex tD A21 IP66 T80°C

Certificates: PCEC (China)

Material

Enclosure: Copper-free aluminium alloy

Glass tube: Toughened glass

Lamp

Lamp specification:

T8 fluorescent lamp / LED module

Lamp power (W):

T8: 18Wx1, 36Wx1, 18Wx2, 36Wx2

LED: 9Wx1, 18Wx1, 9Wx2, 18Wx2

Degree of protection: IP66



Zones 1&2; 21&22

EXPLOSION-PROOF LIGHT FITTINGS FOR FLUORESCENT LAMP



BnY81

- ◆ Built-in electronic ballast, wide voltage input, rapid starting, stable performance, power factor ≥ 0.95 .
- ◆ LED light fittings:
Built-in LED driver, wide voltage input, CC-CV (constant current-constant voltage) output, power factor ≥ 0.95 .
- ◆ Only dual tube light fittings have emergency lighting function.
- ◆ End of lamp life (EOL) rectification effect protection.

Zones 2; 21&22

Explosion protection

Global (IECEX)

Ex nA IIC T4 Gc

Ex t IIIC T80°C Db IP66

Europe (ATEX)

Ex II 3 G Ex nA IIC T4 Gc

Ex II 2 D Ex t IIIC T80°C Db IP66

Certificates: IECEX; ATEX; CU-TR

Material

Enclosure: Polycarbonate; Diffuser: Polycarbonate

Lamp

Lamp specification: T8 tube/LED module

Lamp power (W):

T8: 18Wx1, 18Wx2, 36Wx1, 36Wx2

LED: 9Wx1, 9Wx2, 18Wx1, 18Wx2, 28Wx1, 28Wx2

Degree of protection: IP66, IP67(optional)



EXPLOSION-PROOF LIGHT FITTINGS FOR FLUORESCENT LAMP



HRV51-G/C

- ◆ Built-in electronic ballast, power factor ≥ 0.95 .
- ◆ LED driver, wide voltage input, CC-CV (constant current-constant voltage) output, power factor ≥ 0.95 .
- ◆ End of lamp life (EOL) rectification effect protection.
- ◆ Emergency functions is available on request.

Zones 1&2; 21&22

Explosion protection

Global (IECEX)

Ex db eb IIC T□ Gb

Ex db eb q IIC T□ Gb

Ex tb IIIC T80°C Db IP66/IP67

Europe (ATEX)

Ex II 2 G Ex db eb IIC T□ Gb

Ex II 2 G Ex db eb q IIC T□ Gb

Ex II 2 D Ex tb IIIC T80°C Db IP66/IP67

Certificates: IECEX; ATEX; CU-TR

Material

Enclosure: Stainless steel

Diffuser: Clear polycarbonate

Lamp

Lamp specification: LED module

Lamp power (W):

9Wx2, 18Wx2, 14Wx2, 28Wx2

Degree of protection: IP66/IP67



EXPLOSION-PROOF FLUORESCENT LAMP



HRV81-QT

- ◆ Built-in electronic ballast, power factor ≥ 0.95 .
- ◆ Special-made mounting bracket, the illumination angle can be adjusted on request.
- ◆ Emergency function is available on request.
- ◆ End of lamp life (EOL) rectification effect protection.

Zones 1&2; 21&22

Explosion protection

Global (IECEX)(applied for)

Ex d e q IIC T4 Gb

Ex tb IIIC T80°C Db IP66

Europe (ATEX)(applied for)

Ex II 2 G Ex d e q IIC T4 Gb

Ex II 2 D Ex tb IIIC T80°C Db IP66

Certificates: IECEX; ATEX

Material

Enclosure: Copper-free aluminium alloy

Diffuser: Polycarbonate

Lamp

Lamp specification: T8 tube

Lamp power (W): 18Wx2, 36Wx2

Emergency power (W): 18Wx30%, 36Wx30%

Degree of protection: IP66



EXPLOSION-PROOF LED LIGHTINGS



HRD91-LED

- ◆ Isolated LED lamp compartment, CC-CV (constant current-constant voltage) power controller compartment and terminal compartment; Wind-convection heat dissipation structure;
- ◆ Low-maintenance due to long service life is up to 100,000 operating hours.

Explosion protection

Global (IECEEx)
Ex db IIC T6 or T5 Gb
Ex tb IIC T80°C or T95°C Db
Europe (ATEX)

Ex II 2 G Ex db IIC T6 or T5 Gb

Ex II 2 D Ex tb IIC T80°C or T95°C Db

Certificates: IECEEx; ATEX; CU-TR

Material

Enclosure: Copper-free aluminium alloy
Transparent cover: Toughened glass

Lamp

Lamp specification: LED

Lamp power (W): 30W, 50W, 70W, 100W

Degree of protection: IP66



Zones 1&2; 21&22

EXPLOSION-PROOF LED LIGHTINGS



HRD95

- ◆ Isolated LED lamp compartment, CC-CV (constant current-constant voltage) power controller compartment and terminal compartment; Wind-convection heat dissipation structure.
- ◆ International brand white light LED, reasonable arrangement of multi LED, high lighting efficiency and long service life.
- ◆ Two types of light distribution: spotlight and floodlight, which can be selected on request.
- ◆ Low-maintenance due to long service life is up to 100,000 operating hours.

Explosion protection

Global (IECEEx)
Ex db op is IIC T□ Gb
Ex tb op is IIC T□ Db IP66
Europe (ATEX)

Ex II 2 G Ex db op is IIC T□ Gb

Ex II 2 D Ex tb op is IIC T□ Db IP66

Certificates: IECEEx; ATEX; CU-TR

Material

Enclosure: Copper-free aluminium alloy
Glass cover: Toughened glass

Lamp

Lamp specification: LED module, Multiple LED

Lamp power (W):

60W, 90W, 120W, 160W, 200W, 240W

Degree of protection: IP66, IP67(optional)



Zones 1&2; 21&22

EXPLOSION-PROOF LED LIGHTINGS



HRD96

- ◆ Isolated LED lamp compartment, CC-CV (constant current-constant voltage) power controller compartment and terminal compartment; Wind-convection heat dissipation structure.
- ◆ Low-maintenance due to long service life is up to 100,000 operating hours.

Explosion protection

Global (IECEEx)(applied for)
Ex db IIC T6 Gb
Ex tb IIC T80°C Db IP66
Europe (ATEX)(applied for)

Ex II 2 G Ex db IIC T6 Gb

Ex II 2 D Ex tb IIC T80°C Db IP66

Certificates: IECEEx; ATEX

Material

Enclosure: Copper-free aluminium alloy
Transparent cover: Toughened glass

Lamp

Lamp specification: LED module, Multiple LED

Lamp power (W): 30W, 60W, 120W

Degree of protection: IP66



Zones 1&2; 21&22

EXPLOSION-PROOF LED LIGHTINGS



HRD97

- ◆ Isolated LED lamp compartment, CC-CV (constant current -constant voltage) power controller compartment and terminal compartment; Wind-convection heat dissipation structure.
- ◆ Low-maintenance due to long service life is up to 100,000 operating hours.

Zones 1&2; 21&22

Explosion protection

Global (IECEX)(applied for)
Ex db IIC T6 Gb
Ex tb IIC T80°C Db IP66
Europe (ATEX)(applied for)

Ex II 2 G Ex db IIC T6 Gb

Ex II 2 D Ex tb IIC T80°C Db IP66

Certificates: IECEX; ATEX; CU-TR

Material

Enclosure: Copper-free aluminium alloy
Transparent cover: Toughened glass

Lamp

Lamp specification: LED module, Multiple LED
Lamp power (W): 10W, 20W

Degree of protection: IP66



EXPLOSION-PROOF EMERGENCY LED LIGHT FITTINGS



HRJ

- ◆ International brand white light LED, reasonable arrangement of multi LED, high lighting efficiency and long service life.
- ◆ Emergency device with battery pack, charging automatically; when power supply is cut off, the emergency device starts to work; with overcharge and overdischarge protection.
- ◆ Toughened glass cover resistant to temperature changes.
- ◆ Low-maintenance due to long service life is up to 100,000 operating hours.

Zones 1&2; 21&22

Explosion protection

Global (IECEX)
Ex db op is IIC T6 Gb
Ex tb op is IIC T80°C Db IP66
Europe (ATEX)

Ex II 2 G Ex db op is IIC T6 Gb

Ex II 2 D Ex tb op is IIC T80°C Db IP66

Certificates: IECEX; ATEX; CU-TR

Material

Enclosure: Copper-free aluminium alloy
Glass cover: Toughened glass

Lamp

Lamp specification: LED module, Multiple LED
Lamp power (W): 30W, 60W
Emergency power (W): 20W, 40W

Degree of protection: IP66, IP67(optional)



EXPLOSION-PROOF LED LIGHTINGS



BDD95

- ◆ New COB technology, large power and white light LED array, power of single LED can reach 20W~40W, high lighting efficiency, long service life.
- ◆ Two types of light distribution: spotlight and floodlight, which can be selected on request.
- ◆ 160 type lightings adopt light fitting integrated two lamps, the power of whole machine is of 2x120W, 2x160W
- ◆ Low-maintenance due to long service life is up to 100,000 operating hours.

Zones 1&2; 21&22

Class I, Division 2, Groups A, B, C, D

Explosion protection

Global (IECEX)
Ex db eb op is IIC T□ Gb
Ex tb op is IIC T□ Db IP66
Europe (ATEX)

Ex II 2 G Ex db eb op is IIC T□ Gb

Ex II 2 D Ex op is tb IIC T□ Db IP66

Certificates:

IECEX; ATEX; UL; CU-TR; INMETRO

Material

Enclosure: Copper-free aluminium alloy
Glass cover: Toughened glass

Lamp

Lamp specification: Integrated LED, Multiple LED
Lamp power (W): 60W, 90W, 120W, 160W

Degree of protection: IP66, IP67(optional)



EXPLOSION-PROOF LED FLOODLIGHTS



BAT86

- ◆ Isolated LED lamp compartment, CC-CV (constant current-constant voltage) power controller compartment and terminal compartment; Wind-convection heat dissipation structure.
- ◆ Standard product is of floodlight effect, lens of 40° and 60° can be provided on request to realize spotlight effect.
- ◆ Low-maintenance due to long service life is up to 100,000 operating hours.

Zones 1&2; 21&22

Explosion protection

Global (IECEX)
Ex db IIB+H₂ T□ Gb
Ex tb IIIC T□ Db
Europe (ATEX)

Ⓔ II 2 G Ex db IIB+H₂ T□ Gb

Ⓔ II 2 D Ex tb IIIC T□ Db

Certificates: IECEX; ATEX; CU-TR; INMETRO

Material

Enclosure: Copper-free aluminium alloy

Glass cover: Toughened glass

Lamp

Lamp specification: LED module, Multiple LED

Lamp power (W):

60W, 90W, 120W, 160W, 200W, 240W

Degree of protection: IP66; IP67(optional)



EXPLOSION-PROOF LED FLOODLIGHTS



HRT96

- ◆ Isolated LED lamp compartment and terminal compartment;
- ◆ Wind-convection heat dissipation structure.

Zones 1&2; 21&22

Explosion protection

Global (IECEX)(applied for)

Ex db IIC T6 Gb

Ex tb IIIC T80°C Db IP66

Europe (ATEX)(applied for)

Ⓔ II 2 G Ex db IIC T6 Gb

Ⓔ II 2 D Ex tb IIIC T80°C Db IP66

Certificates: IECEX; ATEX

Material

Enclosure: Copper-free aluminium alloy

Glass cover: Toughened glass

Lamp

Lamp specification: LED module, Multiple LED

Lamp power (W): 80W, 160W, 240W

Degree of protection: IP66



EXPLOSION-PROOF LED LIGHTINGS



HRND95

- ◆ International brand white light LED, reasonable arrangement of multi LED, high lighting efficiency and long service life.
- ◆ Two types of light distribution: spotlight and floodlight, which can be selected on request.
- ◆ Standard luminaries equip without lens, 30° lens and 60° lens which are optional, please indicate when placing an order.
- ◆ Standard luminaries do not equip with external lampshade, if need, please specify.
- ◆ Low-maintenance due to long service life is up to 100,000 operating hours.

Zones 2; 22

Explosion protection

Global (IECEX)

Ex nR IIC T□ Gc

Ex tc IIIC T□ Dc IP66

Europe (ATEX)

Ⓔ II 3 G Ex nR IIC T□ Gc

Ⓔ II 3 D Ex tc IIIC T□ Dc IP66

Certificates: IECEX; ATEX; CU-TR

Material

Enclosure: Copper-free aluminium alloy

Glass cover: Toughened glass

Lamp

Lamp specification: LED module, Multiple LED

Lamp power (W): 40W, 60W, 80W, 120W, 160W,

200W, 240W, 300W

Degree of protection: IP66



EXPLOSION-PROOF LED FLOODLIGHTS



HRNT95

- ◆ International brand white light LED, reasonable arrangement of multi LED, high lighting efficiency and long service life.
- ◆ Two types of light distribution: spotlight and floodlight, which can be selected on request.
- ◆ Standard luminaries equip with 60° lens, 30° lens which is optional, please indicate when placing an order.
- ◆ Low-maintenance due to long service life is up to 100,000 operating hours.

Zones 2; 22

Explosion protection

Global (IECEX)

Ex nR IIC T□ Gc

Ex tc IIIC T□ Dc IP66

Europe (ATEX)

Ex II 3 G Ex nR IIC T□ Gc

Ex II 3 D Ex tc IIIC T□ Dc IP66

Certificates: IECEX; ATEX; CU-TR

Material

Enclosure: Copper-free aluminium alloy

Glass cover: Toughened glass

Lamp

Lamp specification: LED module, Multiple LED

Lamp power (W): 80W, 120W, 240W, 300W

Degree of protection: IP66



EXPLOSION-PROOF LIGHT FITTINGS



HRD61

- ◆ Three enclosure types: 150, 250, 400
- ◆ Integral control gear, easy installation and maintenance.
- ◆ Explosion-proof trigger, rapid starting, stable performance and long service life.
- ◆ Wireless connection between body and top cover, easy installation and maintenance.
- ◆ Powder coated wire guard, white.
- ◆ Toughened glass cover resistant to temperature changes

Zones 1&2; 21&22

Explosion protection

Global (IECEX)

Ex db IIC T4 or T3 Gb

Ex tb IIIC T130°C or T190°C Db IP66

Europe (ATEX)

Ex II 2 G Ex db IIC T4 or T3 Gb

Ex II 2 D Ex tb IIIC T130°C or T190°C Db IP66

Certificates: IECEX; ATEX; CU-TR

Material

Enclosure: Copper-free aluminium alloy

Transparent cover: Toughened glass

Lamp

Lamp holder: E27; E40

Available lamp and lamp power (W):

HIE: 70W, 100W, 150W, 250W, 400W

HME: 80W, 125W, 250W, 400W

HSE: 70W, 100W, 150W, 250W, 400W

Note: HPI European standard ballast is available in general

Degree of protection: IP66, IP67(optional)



EXPLOSION-PROOF LIGHTINGS



BDD81

- ◆ The light fittings are supplied without lamp. PHILIPS lamps are recommended.

Zones 1&2; 21&22

Explosion protection

Global (IECEX)

Ex d IIC T4 Gb

Ex t IIIC T130°C Db IP66

Europe (ATEX)

Ex II 2 G Ex d IIC T4 Gb

Ex II 2 D Ex t IIIC T130°C Db IP66

Certificates: IECEX; ATEX; CU-TR

Material

Enclosure: Copper-free aluminium alloy

Transparent cover: Toughened glass

Lamp

Lamp holder: E27

Available lamp and lamp power (W):

Incandescent lamp: 25W, 40W, 60W, 100W

Energy-saving lamp: 9W, 11W (for sealed atmosphere)

LED: 3W, 5W, 8W

Degree of protection: IP66, IP67(optional)



EXPLOSION-PROOF LIGHT FITTINGS



BDD91

- ◆ Applicable lamp (max.400W):
-Metal halide lamp (HIE)
-High pressure sodium lamp (HSE)
-High pressure mercury lamp (HME)
- ◆ Three enclosure types: 150, 250, 400
- ◆ Integral control gear, easy installation and maintenance.

Explosion protection

Global (IECEX)
Ex d IIC T□ Gb
Ex t IIIC T□ Db IP66
Europe (ATEX)
Ⓔ II 2 G Ex d IIC T□ Gb
Ⓔ II 2 D Ex tb IIIC T□ Db IP66
Certificates: IECEX; ATEX; CU-TR
Material
Enclosure: Copper-free aluminium alloy
Transparent cover: Toughened glass
Lamp
Available lamp and lamp power (W):
Available lamp:
HIE: 70W, 100W, 150W, 250W, 400W
HSE: 70W, 100W, 150W, 250W, 400W
HME: 80W, 125W, 250W, 400W
Lamp holder: E27, E40
Note: HPI European standard ballast is available in general.
Degree of protection: IP66, IP67(optional)



Zones 1&2; 21&22

EXPLOSION-PROOF LIGHT FITTINGS



BnD81

- ◆ Applicable lamp (max.400W):
-Metal halide lamp (HIE)
-High pressure sodium lamp (HSE)
-High pressure mercury lamp (HME)
- ◆ Three enclosure types: 150, 250, 400
- ◆ Integral control gear, easy installation and maintenance.
- ◆ Both American standard and European standard are available.

Explosion protection

Global (IECEX)
Ex nR IIC T4 or T3 Gc
Ex t IIIC T130°C or T190°C Db IP65
Europe (ATEX)
Ⓔ II 3 G Ex nR IIC T4 or T3 Gc
Ⓔ II 2 D Ex tb IIIC T130°C or T190°C Db IP65
Certificates: IECEX; ATEX; UL; CU-TR
Material
Enclosure: Copper-free aluminium alloy
Transparent cover: Toughened glass
Lamp
Lamp holder:
American Standard: E26, E39; European Standard: E27, E40
Available lamp and lamp power (W):

Available lamp	American Standard	European Standard
HIE	70W, 100W, 150W, 175W, 250W, 400W	70W, 100W, 150W, 250W, 400W
HSE	70W, 100W, 150W, 250W, 400W	70W, 100W, 150W, 250W, 400W
HME	-	80W, 125W, 250W, 400W

Note: Please see Selection table of American standard HID lamp and corresponding electrical components
Degree of protection: IP65



Zones 2; 21&22
Class I, Division 2, Groups A, B, C, D

EXPLOSION-PROOF FLOODLIGHTS



BAT53

- ◆ Four enclosure types: 125, 250, 400, 1000.
- ◆ Integral control gear, easy installation and maintenance.
- ◆ Rapid starting trigger, stable performance and long service life.

Explosion protection

Global (IECEX)
Ex d e IIB T□ Gb
Ex tb IIIC T□ Db IP66
Europe (ATEX)
Ⓔ II 2 G Ex db e IIB T□ Gb
Ⓔ II 2 D Ex tb IIIC T□ Db IP66
Certificates: IECEX; ATEX; CU-TR
Material
Enclosure: Copper-free aluminium alloy
Glass cover: Toughened glass
Lamp
Lamp holder: E27, E40
Available lamp and lamp power (W):
High pressure sodium lamp (HSE):
70W, 100W, 150W, 250W, 400W (tubular), 1000W
High pressure mercury lamp (HME):
80W, 125W, 250W
Metal halide lamp (HIE):
70W, 100W, 150W, 250W, 400W (tubular), 1000W
Note: HPI European standard ballast is available in general
Degree of protection: IP66



Zones 1&2; 21&22

EXPLOSION-PROOF FLOODLIGHTS



BAT85

- ◆ Integral control gear, easy installation and maintenance.
- ◆ The light fittings are supplied without lamp. PHILIPS lamps are recommended.
- ◆ Both American standard and European standard are available.

Zones 1&2; 21&22

Class I, Division 1, Groups A, B, C, D

Explosion protection

Global (IECEX)

Ex db IIC T3 or xxx°C Gb

Ex tb IIIC Txxx°C Db IP66

Europe (ATEX)

Ex II 2 G Ex db IIC T3 or xxx°C Gb

Ex II 2 D Ex tb IIIC Txxx°C Db IP66

Certificates: IECEX; ATEX; CU-TR

Material

Enclosure: Copper-free aluminium alloy

Glass cover: Toughened glass

Lamp

Lamp holder:

European standard: E27, E40, American standard: E26, E39

Available lamp:

Metal halide lamp (HIE): 70W, 100W, 150W, 250W, 400W

High pressure sodium lamp (HSE): 70W, 100W, 150W, 250W, 400W

High pressure mercury lamp (HME): 250W, 400W

Degree of protection: IP66



EXPLOSION-PROOF FLOODLIGHTS



BnT81

- ◆ Two enclosure types: 400, 1000.
- ◆ Type 400:
Lamp and ballast are of integral type.
- ◆ Type 1000:
Lamp and ballast are split type.
- ◆ Both American standard and European standard are available.
- ◆ Type 400 are supplied without lamp, PHILIPS lamps are recommended.
- ◆ Type 1000 are supplied with lamp.

Zones 2; 21&22

Class I, Division 2, Groups A, B, C, D

Explosion protection

Global (IECEX)

Ex nR IIC xxx Gc

Ex t IIIC Txxx°C Db IP65

Europe (ATEX)

Ex II 3 G Ex nR IIC xxx Gc

Ex II 2 D Ex t IIIC Txxx°C Db IP65

Certificates: IECEX; ATEX; UL; CU-TR

Material

Enclosure: Copper-free aluminium alloy

Glass cover: Toughened glass

Lamp

Lamp holder:

American Standard: E39; European Standard: E40

Available lamp and lamp power (W):

HIE: 175W, 250W, 400W, 1000W

HSE: 150W, 250W, 400W, 1000W

Note: Please see Selection table of American standard HID lamp and corresponding electrical components

Degree of protection: IP65



EXPLOSION-PROOF FLOODLIGHTS



HRT81

- ◆ Two enclosure types: 400, 1000.
- ◆ Type 400:
Lamp and ballast are of integral type.
- ◆ Type 1000:
Lamp and ballast are split type.
- ◆ Type 400 are supplied without lamp, PHILIPS lamps are recommended.
- ◆ Type 1000 are supplied with lamp.

Zones 2; 21&22

Explosion protection

Global (IECEX)(applied for)

Ex nR IIC T□ Gc

Ex t IIIC T□ Db IP66

Europe (ATEX)(applied for)

Ex II 3 G Ex nR IIC T□ Gc

Ex II 2 D Ex tb IIIC T□ Db IP66

Certificates: IECEX; ATEX

Material

Enclosure: 316 stainless steel

Glass cover: Toughened glass

Lamp

Lamp holder: E40

Available lamp and lamp power (W):

HIE: 250W, 400W, 1000W

HSE: 150W, 250W, 400W, 1000W

Note: HPI European standard ballast is available in general

Degree of protection: IP65



PORTABLE SEARCHLIGHT



HRD305

- ◆ Heat resistant: LED radiator and battery are effectively isolated, which improves the stability of the light.
- ◆ Intelligent control: pulse dimming technology, strong light and working light can be changed at random, with battery detection indicator, which can detect the working condition at any time, intelligent charger is with protection circuit.
- ◆ Portable and flexible: small volume, light weight, several types of handling like portable and on shoulder, meet different working requirement.

Explosion protection

Global (IECEX)
Ex d ia IIC T6 Gb
Ex tb IIIC T80°C Db IP68
Europe (ATEX)

Ex II 2 G Ex d ia IIC T6 Gb

Ex II 2 D Ex tb IIIC T80°C Db IP68

Certificates: IECEX; ATEX; CU-TR

Lamp (LED)

Rated power: 9W/3W

Current of strong light: 900mA

Degree of protection: IP68



Zones 1&2; 21&22

SEARCHLIGHT



HRD309E

- ◆ Safe and reliable:
The product with good explosion-proof performance and antistatic effect, can safely and reliably work in various combustible areas.
- ◆ Efficient and energy-saving:
LED solid lamp, low energy consumption, high luminous efficacy, long service life, maintenance free and no subsequent usage cost, memory-free battery is recyclable, pollution-free.

Explosion protection

Global (IECEX)
Ex nA nR IIC T4 Gc
Ex tb IIIC T80°C Db IP66
Europe (ATEX)

Ex II 3 G Ex nA nR IIC T4 Gc

Ex II 2 D Ex tb IIIC T80°C Db IP66

Certificates: IECEX; ATEX

Lamp

Rated power: 9W/3W

Average service life: 100000h

Degree of protection: IP66



Zones 2; 21&22

EXPLOSION-PROOF INCANDESCENT HAND LAMPS



BSX-60

- ◆ Incandescent lamps: Max. 60W
LED: Max. 8W.
- ◆ Cable on request.
- ◆ Handle in plastic, with control pushbutton.
- ◆ Powder coated wire guard, white.
- ◆ Movable transformer on request.

Explosion protection

Global (IECEX)
Ex d e IIC T4
Europe (ATEX)

Ex II 2 G Ex d e IIC T4

Certificates: IECEX; ATEX; CU-TR

Material

Enclosure: Copper-free aluminium alloy

Lamp

Lamp holder: E27

Available lamp:

Incandescent lamp: 25W, 40W, 60W

LED: 3W, 5W, 8W

Degree of protection: IP65



Zones 1&2

EXPLOSION-PROOF EMERGENCY LIGHT FITTINGS



BAJ52-20

- ◆ Lighting angle can be adjusted.
- ◆ Low-power halogen tungsten lamps, with reflector to increase lighting intensity.
- ◆ Emergency device with Ni-MH batteries, charging automatically; when power supply is cut off, the emergency device starts to work; with overcharge and overdischarge protection.

Zones 1&2

Explosion protection

Global (IECEX)

Ex d IIB T4

Europe (ATEX)

Ex II 2 G Ex d IIB T4

Certificates: IECEX; ATEX

Material

Enclosure: Copper-free aluminium alloy

Lamp

Available lamp:

Halogen tungsten lamp (LED on request)

Lamp power (W):

2 x 10W (LED lamp power: 2 x 1W)

Emergency time: 90min

Rated luminous flux:

Halogen tungsten lamp: 2 x 100lm (LED lamp: 2 x 90lm)

Degree of protection: IP65



EXPLOSION-PROOF EMERGENCY EXIT LIGHT FITTINGS



BAYD85

- ◆ Designed with test button and sleep button. The test button is for testing. Press the button, lamp shall automatically enter into emergency status. The sleep button is to stop the lamp source output, press this button, the lamp turned off, re-press the button, lamp on and return to work.
- ◆ Ultra-bright LED lamp, low power consumption and long service life up to 50,000 hours; energy saving and environmental protection.

Zones 1&2; 21&22

Explosion protection

Global (IECEX)

Ex d IIB T6 Gb

Ex tb IIIC T80°C Db IP66

Europe (ATEX)

Ex II 2 G Ex d IIB T6 Gb

Ex II 2 D Ex tb IIIC T80°C Db IP66

Certificates: IECEX; ATEX; CU-TR

Material

Enclosure: Copper-free aluminium alloy

Lamp

LED lamp (working voltage DC 3.6V)

Power consumption: 4W

Emergency time: 180min

Degree of protection: IP66, IP67(optional)



EXPLOSION-PROOF TANK INSPECTION VESSEL LIGHT FITTINGS



BAK51

- ◆ Available for 35W or 50W halogen tungsten lamp, with high light efficiency and long service life.
- ◆ A or B mounting type is optional.

Zones 1&2; 21&22

Explosion protection

Global (IECEX)

Ex db IIB T3 Gb

Ex tb IIIC T190°C Db IP66

Europe (ATEX)

Ex II 2 G Ex db IIB T3 Gb

Ex II 2 D Ex tb IIIC T190°C Db IP66

Certificates: IECEX; ATEX

Material

Enclosure: Copper-free aluminium alloy

Lamp

Available lamp: Halogen tungsten lamp

Lamp holder: GY6.35

Lamp power (W): 35W, 50W

Degree of protection: IP66



EXPLOSION-PROOF LED TANK INSPECTION VESSEL LIGHT FITTINGS



BAK85

- ◆ Applicable lamp and power:
LED lamps, energy-saving and long service life, 9W.

Zones 1&2; 21&22

Explosion protection

Global (IECEX)
Ex db op is IIC T6 Gb
Ex tb op is IIIC T80°C Db IP66/IP67
Europe (ATEX)
Ⓔ II 2 G Ex db op is IIC T6 Gb
Ⓔ II 2 D Ex tb op is IIIC T80°C Db IP66/IP67

Certificates: IECEX; ATEX

Material

Enclosure: Copper-free aluminium alloy
Glass cover: Toughened glass

Lamp

Lamp specification:
International brand of LED module
Lamp power (W): 9W

Degree of protection: IP66/IP67



EXPLOSION-PROOF CAUTION SPOTLIGHT FITTINGS



BSZD81-E

BSZD81-C



BSZD81

- ◆ Ultra-bright LED lamp, low consumption and long service life up to 50,000 hours, integrated chip control with various circuit protection.
- ◆ Synchronous flashing of light fittings through signal lines.

Zones 1&2; 21&22

Explosion protection

Global (IECEX)
Ex d e IIC T6 Gb
Ex tb IIIC T80°C Db IP65
Europe (ATEX)

Ⓔ II 2 G Ex d e IIC T6 Gb

Ⓔ II 2 D Ex tb IIIC T80°C Db IP65

Certificates: ATEX; IECEX; CU-TR

Material

Enclosure: Copper-free aluminium alloy
Transparent cover: Toughened glass

Lamp

Lamp specification: LED

Lamp power (W):

BSZD81-E: < 10W (continuous work)

BSZD81-C: 40W (continuous work)

Degree of protection: IP65



EXPLOSION-PROOF LOW INTENSITY AIRCRAFT WARNING LIGHT



BSZD85-E

- ◆ Ultra-bright LED lamp, low consumption and long service life up to 50,000 hours, integrated chip control with various circuit protection.
- ◆ Synchronous flashing of light fittings through signal lines.
- ◆ Low luminous intensity.

Zones 1&2; 21&22

Explosion protection

Global (IECEX)(applied for)
Ex db IIC T6 Gb
Ex tb IIIC T80°C Db
Europe (ATEX)(applied for)

Ⓔ II 2 G Ex db IIC T6 Gb

Ⓔ II 2 D Ex tb IIIC T80°C Db

Certificates: ATEX; IECEX

Material

Enclosure: Copper-free aluminium alloy
Transparent cover: Toughened glass

Lamp

Lamp specification: LED

Lamp power (W): < 8W (continuous work)

Degree of protection: IP66



EXPLOSION-PROOF MEDIUM INTENSITY AIRCRAFT WARNING LIGHT



BSZD85-C

- ◆ Ultra-bright LED lamp, low consumption and long service life up to 50,000 hours, integrated chip control with various circuit protection.
- ◆ Synchronous flashing of light fittings through signal lines.
- ◆ Medium luminous intensity.

Zones 1&2; 21&22

Explosion protection

Global (IECEX)(applied for)

Ex db eb ib IIC T6 Gb

Ex tb IIC T80°C Db

Europe (ATEX)(applied for)

Ex II 2 G Ex db eb ib IIC T6 Gb

Ex II 2 D Ex tb IIC T80°C Db

Certificates: ATEX; IECEX

Material

Enclosure: Copper-free aluminium alloy

Transparent cover: Toughened glass

Lamp

Lamp specification: LED

Lamp power (W): ≤ 40W (continuous work)

Degree of protection: IP66



EXPLOSION-PROOF AUDIO AND VISUAL CAUTION SPOTLIGHT FITTINGS



BBJ81

- ◆ Ultra-bright LED lamp, low power consumption and long service life.
- ◆ Lamp colours: red, blue, yellow, green.

Zones 1&2; 21&22

Explosion protection

Global (IECEX)

Ex d ib IIC T6 Gb

Ex t IIC T80°C Db IP66

Europe (ATEX)

Ex II 2 G Ex d ib IIC T6 Gb

Ex II 2 D Ex t IIC T80°C Db IP66

Certificates: ATEX; IECEX; CU-TR

Material

Enclosure: Copper-free aluminium alloy

Transparent cover: Toughened glass

Lamp

Lamp specification: LED

Lamp power (W): 5W

Degree of protection: IP66, IP67(optional)



EXPLOSION-PROOF CAUTION SPOTLIGHT FITTINGS



BJD81

- ◆ Ultra-bright LED lamp, low power consumption and long service life.
- ◆ Lamp colour red, blue, yellow, green.

Zones 1&2; 21&22

Explosion protection

Global (IECEX)

Ex d IIC T6 Gb

Ex t IIC T80°C Db IP66

Europe (ATEX)

Ex II 2 G Ex d IIC T6 Gb

Ex II 2 D Ex t IIC T80°C Db IP66

Certificates: ATEX; IECEX; CU-TR

Material

Enclosure: Copper-free aluminium alloy

Transparent cover: Toughened glass

Lamp

Lamp specification: LED

Lamp power (W): 3W

Lamp colour: Red, blue, yellow, green

Degree of protection: IP66, IP67(optional)



EXPLOSION-PROOF ILLUMINATION SWITCHES



BZM

- ◆ Two options:
-On-off switch
-Changeover switch

Explosion protection

Global (IECEX)
Ex d IIC T6 Gb
Ex tb IIIC T80°C Db
Europe (ATEX)

Ex II 2 G Ex d IIC T6 Gb

Ex II 2 D Ex tb IIIC T80°C Db

Certificates: IECEX; ATEX; CU-TR

Enclosure material:

Copper-free Aluminium Alloy, powder coated surface

Exposed fastener: Stainless steel

Rated voltage: Max. 250V AC

Rated current: 16A, 25A

Degree of protection: IP66



Zones 1&2; 21&22

EXPLOSION-PROOF JUNCTION BOXES



BHD51

- ◆ Six types: A, B, C, D, E, F.
- ◆ Type A, B, C, D, E in Copper-free Aluminium Alloy only;
Type F in Copper-free Aluminium Alloy or cast iron.

Explosion protection

Global (IECEX)
Ex db IIC T6 Gb
Ex tb IIIC T80°C Db
Europe (ATEX)

Ex II 2 G Ex db IIC T6 Gb

Ex II 2 D Ex tb IIIC T80°C Db

Certificates: IECEX; ATEX; CU-TR

Enclosure material:

Copper-free Aluminium Alloy or cast iron, powder coated surface

Exposed fastener: Stainless steel

Rated voltage: Max. 500V AC

Rated current: 20A

Degree of protection: IP66, IP67(optional)



Zones 1&2; 21&22

EXPLOSION-PROOF JUNCTION BOXES



BHD91

- ◆ Four types: A, B, C, D
- ◆ Copper-free aluminium alloy enclosure, power coated surface.

Explosion protection

Global (IECEX)
Ex db IIC T6 Gb
Ex tb IIIC T80°C Db IP66
Europe (ATEX)

Ex II 2 G Ex db IIC T6 Gb

Ex II 2 D Ex tb IIIC T80°C Db IP66

Certificates: IECEX; ATEX; CU-TR; UL

Enclosure material:

Copper-free Aluminium Alloy, powder coated surface

Exposed fastener: Stainless steel

Rated voltage: Max. 500V AC

Rated current and Terminal data:

Cross section	2.5mm ²	4mm ²	6mm ²
Rated current	24A	32A	41A
Terminal number	12	10	8

Degree of protection: IP66, IP67(optional)



Zones 1&2; 21&22

Class I, Division 1, Groups A, B, C, D

EXPLOSION-PROOF TERMINAL BOXES



Ex d IIB



BXJ-IIB

- ◆ Size and direction of cable entries can be customized on request.

Zones 1&2; 21&22

Explosion protection

Global (IECEX)

Ex db IIB+H₂ T6 or T5 Gb

Ex tb IIIC T80°C or T95°C Db IP66

Europe (ATEX)

Ⓔ II 2 G Ex db IIB+H₂ T6 or T5 Gb

Ⓔ II 2 D Ex tb IIIC T80°C or T95°C Db IP66

Certificates: IECEX; ATEX; CU-TR

Enclosure material:

Copper-free Aluminium Alloy (carbon steel or stainless steel is optional), powder coated surface

Exposed fastener: Stainless steel

Rated voltage: Max. 800V AC

Rated current:

Cross section	2.5mm ²	4mm ²	6mm ²	10mm ²	16mm ²	35mm ²	70mm ²	240mm ²
Rated current	24A	32A	41A	57A	76A	125A	192A	400A

Degree of protection: IP66, IP67(optional)



EXPLOSION-PROOF TERMINAL BOXES



Ex d IIC



BXJ-IIC

- ◆ Size and direction of cable entries can be customized on request.

Zones 1&2; 21&22

Explosion protection

Global (IECEX)

Ex d IIC T6 Gb

Ex tb IIIC T80°C Db IP65

Europe (ATEX)

Ⓔ II 2 G Ex d IIC T6 Gb

Ⓔ II 2 D Ex tb IIIC T80°C Db IP65

Certificates: IECEX; ATEX; CU-TR

Enclosure material:

Copper-free Aluminium Alloy (carbon steel or stainless steel is optional), powder coated surface

Exposed fastener: Stainless steel

Rated voltage: Max. 690V AC

Rated current:

Cross section	2.5mm ²	4mm ²	6mm ²	10mm ²	16mm ²	35mm ²	70mm ²	95mm ²
Rated current	24A	32A	41A	57A	76A	125A	192A	250A

Degree of protection: IP65



TERMINAL BOXES



Ex e IIC



BXJ-e

- ◆ Size and direction of cable entries can be customized on request.

Zones 1&2; 21&22

Explosion protection

Global (IECEX)

Ex e IIC T6 or T5 Gb

Ex ib IIC T6 Gb

Ex tb IIIC T80°C Db IP66

Europe (ATEX)

Ⓔ II 2 G Ex e IIC T6 or T5 Gb

Ⓔ II 2 G Ex ib IIC T6 Gb

Ⓔ II 2 D Ex tb IIIC T80°C Db IP66

Certificates: IECEX; ATEX; CU-TR

Enclosure material:

Copper-free Aluminium Alloy, powder coated surface

Exposed fastener: Stainless steel

Rated voltage: Max. 690V AC

Rated current:

Cross section	2.5mm ²	4mm ²	6mm ²	10mm ²	16mm ²	35mm ²
Ex e Rated current	24A	32A	41A	57A	76A	125A
Ex ib Rated current	5A	5A	5A	-	-	-

Degree of protection: IP66, IP67(optional)



TERMINAL BOXES



BXJ8050

- ◆ International brand of explosion-proof terminal blocks.

Explosion protection

Global (IECEX)
Ex e IIC T6 or T5 Gb
Ex ia IIC T6 Ga
Ex tb IIIC T80°C Db IP66
Europe (ATEX)

Ex II 2 G Ex e IIC T6 or T5 Gb

Ex II 1 G Ex ia IIC T6 Ga

Ex II 2 D Ex tb IIIC T80°C Db IP66

Certificates: IECEX; ATEX; CU-TR

Enclosure material:

GRP (glass fibre-reinforced polyester resin)

Exposed fastener: Stainless steel

Rated voltage: Max. 690V AC

Rated current:

Cross section	2.5mm ²	4mm ²	6mm ²	10mm ²	16mm ²	35mm ²
Ex e Rated current	24A	32A	41A	57A	76A	125A
Ex ia Rated current	5A	5A	5A	-	-	-

Degree of protection: IP66, IP67(optional)



Zones 0&1&2; 21&22

JUNCTION BOXES



BXJ8050-20/6

- ◆ GRP (glass fibre-reinforced polyester resin) enclosure.

Explosion protection

Global (IECEX)

Ex e II T6

Europe (ATEX)

Ex II 2 G Ex e IIC T6 Gb

Certificates: IECEX; ATEX; CU-TR

Enclosure material:

GRP (glass fibre-reinforced polyester resin)

Exposed fastener: Stainless steel

Rated voltage: Max. 500V AC

Rated current: 20A

Degree of protection: IP65



Zones 1&2; 21&22

TERMINAL BOXES



BXJ-S

- ◆ International brand of explosion-proof terminal blocks.

Explosion protection

Global (IECEX)

Ex eb IIC T6...T3 Gb

Ex ia IIC T6 Ga

Ex tb IIIC T80°C...T130°C Db

Europe (ATEX)

Ex II 2 G Ex eb IIC T6...T3 Gb

Ex II 1 G Ex ia IIC T6 Ga

Ex II 2 D Ex tb IIIC T80°C...T130°C Db IP66

Certificates: IECEX; ATEX; CU-TR; UL

Enclosure material: Stainless steel

Exposed fastener: Stainless steel

Rated voltage: Max. 1000V AC, Max. 1500V DC

Cross section	2.5mm ²	4mm ²	6mm ²	10mm ²	16mm ²	35mm ²	70mm ²
Ex e Rated current	24A	32A	41A	57A	76A	125A	192A
Ex ia Rated current	5A	5A	-	-	-	-	-

Cross section	120mm ²	165mm ²	300mm ²	2 x 165mm ²	2 x 300mm ²	3 x 300mm ²
Ex e Rated current	269A	353A	520A	550A	700A	1000A
Ex ia Rated current	-	-	-	-	-	-

Degree of protection: IP66, IP67(optional)



Zones 0&1&2; 21&22

Class I, Division 2, Groups A,B,C,D

EXPLOSION-PROOF PLUG AND SOCKETS



BCZ8060

- ◆ 2P, 3P, 4P and 5P.
- ◆ Only the switch in the socket cut off can plug be pulled out, power after inserting the plug.
- ◆ GRP (glass fibre-reinforced polyester resin).

Zones 1&2; 21&22

Explosion protection

Global (IECEX)

Ex db eb IIC T□ Gb

Ex tb IIIC T□ °C Db IP66

Europe (ATEX)

Ex II 2 G Ex db eb IIC T□ Gb

Ex II 2 D Ex tb IIIC T□ °C Db IP66

Certificates: IECEX; ATEX; CU-TR

Enclosure material:

GRP (glass fibre-reinforced polyester resin)

Exposed fastener: Stainless steel

Rated voltage: MAX: 690V AC

Rated current:

10A, 16A, 20A, 32A, 50A, 60A, 63A, 100A, 125A

Degree of protection: IP66



EXPLOSION-PROOF PLUG AND SOCKETS



BCZ85

- ◆ Four enclosure types; Four current ratings (16A, 32A, 63A, 125A); 3P, 4P or 5P.
- ◆ Only the switch in the socket cut off can plug be pulled out, power after inserting the plug.
- ◆ Copper-free Aluminium Alloy enclosure, powder coated surface.

Zones 1&2; 21&22

Explosion protection

Global (IECEX)

Ex db IIC T6 Gb

Ex tb IIIC T80°C Db IP66

Europe (ATEX)

Ex II 2 G Ex db IIC T6 Gb

Ex II 2 D Ex tb IIIC T80°C Db IP66

Certificates: IECEX; ATEX; CU-TR

Enclosure material: Copper-free Aluminium

Alloy, powder coated surface

Exposed fastener: Stainless steel

Rated voltage: Max. 690V AC

Rated current:

10A, 16A, 20A, 32A, 50A, 63A, 100A, 125A

Degree of protection: IP66, IP67(optional)



EXPLOSION-PROOF PLUG CONNECTORS



BLJ85

- ◆ 4 enclosure types; 8 current ratings (10A, 16A, 25A, 32A, 63A, 80A, 100A, 125A); 2P, 3P, 4P and 5P.
- ◆ Copper-free Aluminium Alloy enclosure, anodic-oxidation treatment for surface.

Zones 2; 21&22

Explosion protection

Europe (ATEX)

Ex II 3 G Ex ec IIC T6 Gb

Ex II 2 D Ex tb IIIC T80°C Db IP66

Certificates: IECEX; ATEX (applied for)

Enclosure material: Copper-free Aluminium

Alloy, anodic-oxidation treatment for surface

Exposed fastener: Stainless steel

Rated voltage: DC/AC 36V, 24V

AC 600V~690V, 480V~500V, 380V~415V,

200V~250V, 100V~130V

Rated current:

10A, 16A, 25A, 32A, 63A, 80A, 100A, 125A

Degree of protection: IP66



EXPLOSION-PROOF MOVABLE SWITCHBOARDS



BCZY

- ◆ Type A (portable type) and type B (push type) for option.
- ◆ The enclosure of type A (portable type): Stainless steel or GRP (glass fibre-reinforced polyester resin), the Max. transformer capacity of stainless steel product: 1600VA; the Max. transformer capacity of GRP product: 300VA.
- ◆ Several kinds of voltage for option.
- ◆ Portable type is equipped with 5m cable; push type is equipped with 20m cable; also can be customized on request.
- ◆ Type A with transformer function.

Zones 1&2; 21&22

Explosion protection

Global (IECEx)(applied for)

Ex db eb IIC T4 Gb

Ex tb IIIC T80°C Db IP66

Europe (ATEX)(applied for)

Ex II 2 G Ex db eb IIC T4 Gb

Ex II 2 D Ex tb IIIC T80°C Db IP66

Certificates: IECEx; ATEX

Material:

Enclosure (Portable type): Stainless steel or GRP

Plug and flange type socket:

GRP (glass fibre-reinforced polyester resin)

Exposed fastener: Stainless steel

Rated voltage:

3P: 200~250V AC, 5P: 380~415V AC

Rated current: 16A

Degree of protection: IP66



EXPLOSION-PROOF POSITION SWITCHES



HRZX91

- ◆ Types: D, Z, L, N, K.
- ◆ Increased safety enclosure with explosion-proof components.
- ◆ Copper-free Aluminium Alloy enclosure, powder coated surface.

Zones 1&2; 21&22

Explosion protection

Global (IECEx)

Ex db IIC T6 Gb

Ex tb IIIC T80°C Db IP66

Europe (ATEX)

Ex II 2 G Ex db IIC T6 Gb

Ex II 2 D Ex tb IIIC T80°C Db IP66

Certificates: IECEx; ATEX

Enclosure material:

Copper-free Aluminium Alloy, powder coated surface

Exposed fastener: Stainless steel

Rated voltage: 240V AC, 250V DC

Rated current: 3A AC; 0.27A DC

Degree of protection: IP66



EXPLOSION-PROOF CONTROL STATIONS



BZC

- ◆ Six types of enclosure.

Zones 1&2; 21&22

Explosion protection

Global (IECEx)

Ex db IIB+H₂ T6 Gb

Ex tb IIIC T80°C Db IP66

Europe (ATEX)

Ex II 2 G Ex db IIB+H₂ T6 Gb

Ex II 2 D Ex tb IIIC T80°C Db IP66

Certificates: IECEx; ATEX; CU-TR

Enclosure material:

Copper-free Aluminium Alloy, powder coated surface

Exposed fastener: Stainless steel

Rated voltage: Max. 415V AC

Rated current: 10A

Degree of protection: IP66, IP67(optional)



FLAMEPROOF PUSH BUTTON



HA

- ◆ Five different ways of operation
 - Spring-return push button
 - Key-operated push button
 - Mushroom stay-put emergency push button
 - Mushroom turn-to-release emergency push button
 - Rotary push button
- ◆ Mushroom stay-put emergency push button / mushroom turn-to-release emergency push button can be equipped with protection cover, please specify when ordering. Material of protection cover: stainless steel and PC, please specify when ordering.

Zones 1&2; 21&22

Explosion protection

Global (IECEX)

Ex db IIC Gb

Ex tb IIIC Db

Europe (ATEX)

Ex II 2 G Ex db IIC Gb

Ex II 2 D Ex tb IIIC Db

Certificates: IECEX; ATEX

Rated voltage: 660V AC; 440V DC

Rated current: 10A(for 660V AC); 6A(for 440V DC)

Degree of protection: IP66



INDICATORS



HD

- ◆ Available in
 - red
 - green
 - yellow
 - blue
 - white
- ◆ Two versions
 - screw connection
 - 2m cable connection

Zones 1&2; 21&22

Explosion protection

Global (IECEX)

Ex db IIC Gb

Ex tb IIIC Db IP66

Europe (ATEX)

Ex II 2 G Ex db IIC Gb

Ex II 2 D Ex tb IIIC Db IP66

Certificates: IECEX; ATEX

Rated voltage:

440V AC, 50/60Hz; 220~415V AC, 50/60Hz;

220V DC; 48~120V AC/DC; 12~36V AC/DC

Degree of protection: IP66



CONTROL SWITCHES



HK

- ◆ Available in latching and spring-return forms.
- ◆ Different function options.
- ◆ Number of pole: 2P, 3P, 4P, 6P.
- ◆ The switch shall be fitted inside Ex d enclosure.

Zones 1&2; 21&22

Explosion protection

Global (IECEX)

Ex db IIC Gb

Ex tb IIIC Db

Europe (ATEX)

Ex II 2 G Ex db IIC Gb

Ex II 2 D Ex tb IIIC Db

Certificates: IECEX; ATEX

Rated voltage: 500V AC, 400V DC

Rated current: 16A

Degree of protection: IP66



EXPLOSION-PROOF CONTROL UNIT SYSTEMS



BZA8050

- ◆ Three types of enclosure.
- ◆ Individual unit can be combined into larger units.

Explosion protection

Global (IECEX)
Ex d e IIC T6 Gb
Europe (ATEX)



Ex II 2 G Ex d e IIC T6

Certificates: IECEX; ATEX

Enclosure material:

GRP (glass fibre-reinforced polyester resin)

Exposed fastener: Stainless steel

Rated voltage: Max. 415V AC

Rated current: 6A(IECEX); 10A(ATEX)

Degree of protection: IP65



Zones 1&2; 21&22

EXPLOSION-PROOF CONTROL UNIT SYSTEMS



BZA85

- ◆ push button, Indicator, Ammeter, Voltmeter.....

Explosion protection

Global (IECEX)
Ex db IIC T6 Gb
Ex tb IIIC T80°C Db IP66
Europe (ATEX)



Ex II 2 G Ex db IIC T6 Gb

Ex II 2 D Ex tb IIIC T80°C Db IP66

Certificates: IECEX; ATEX; CU-TR

Enclosure material:

Copper-free Aluminium Alloy, powder coated surface

Exposed fastener: Stainless steel

Rated voltage: Max.500V AC, 250V DC

Rated current: Max.10A (AC), 6A (DC)

Degree of protection: IP66, IP67(optional)



Zones 1&2; 21&22

CONTROL STATIONS (GRP)



BZC8050

- ◆ Four types of enclosure.

Explosion protection

Global (IECEX)
Ex d e IIC T6 Gb
Europe (ATEX)



Ex II 2 G Ex d e IIC T6 Gb

Ex II 2 D Ex tb IIIC T80°C Db IP65

Certificates: IECEX; ATEX; CU-TR

Enclosure material:

GRP (glass fibre-reinforced polyester resin)

Exposed fastener: Stainless steel

Rated voltage: Max. 415V AC

Rated current:

Main circuit current:

6A (for BZC8050-A2D2, BZC8050-A2B1)

16A (for BZC8050-K1)

10A (for others)

Degree of protection: IP65, IP66(optional)



Zones 1&2; 21&22

CONTROL STATIONS (ALUMINIUM ALLOY)



BZC8050

- ◆ Seven types of enclosure.

Zones 1&2; 21&22

Explosion protection

Global (IECEX)

Ex d e IIC T6 Gb

Europe (ATEX)

Ex II 2 G Ex d e IIC T6 Gb

Ex II 2 D Ex tb IIIC T80°C Db IP65

Certificates: IECEX; ATEX; CU-TR

Enclosure material:

Copper-free Aluminium Alloy, powder coated surface

Exposed fastener: Stainless steel

Rated voltage: Max. 415V AC

Rated current:

Main circuit current:

6A (for BZC8050-A2D2, BZC8050-A2B1)

16A (for BZC8050-K1)

10A (for others)

Degree of protection: IP65, IP66(optional)



CONTROL STATIONS (STAINLESS STEEL)



BZC8050

- ◆ Five types of enclosure.

Zones 1&2; 21&22

Explosion protection

Global (IECEX)

Ex d e IIC T6 Gb

Europe (ATEX)

Ex II 2 G Ex d e IIC T6 Gb

Ex II 2 D Ex tb IIIC T80°C Db IP65

Certificates: IECEX; ATEX; CU-TR

Enclosure material: Stainless steel

Exposed fastener: Stainless steel

Rated voltage: Max. 415V AC

Rated current:

Main circuit current:

6A (for BZC8050-A2D2, BZC8050-A2B1)

16A (for BZC8050-K1)

10A (for others)

Degree of protection: IP65, IP66(optional)



CONTROL BUTTONS



BA8050

- ◆ 2 versions of component
 - 1 NO
 - 1 NC
- ◆ Eight different ways of operation
 - Spring-return control button
 - Mushroom stay-put emergency control button
 - Key-operated control button
 - Rotary control button
 - Double control button
 - Mushroom turn-to-release emergency control button
 - Push button with indicator
 - Key-operated mushroom turn-to-release emergency control pushbutton

Zones 1&2; 21&22

Explosion protection

Global (IECEX)

Ex d e IIC Gb

Europe (ATEX)

Ex II 2 G Ex d e IIC Gb

Certificates: IECEX; ATEX; CU-TR

Enclosure material: Polyamide (PA66)

Rated voltage: Max. 415V AC

Rated current: 6A



INDICATORS



BD8050

- ◆ Available in
 - red
 - green
 - yellow
 - blue
 - white
- ◆ Two mounting types
 - cover mounting
 - rail mounting

Explosion protection

Global (IECEX)

Ex d e IIC Gb

Europe (ATEX)

Ex II 2 G Ex d e IIC Gb

Certificates: IECEX; ATEX; CU-TR

Rated voltage:

12V...415V AC/DC (-10%...+6%)

Frequency: 0Hz...60Hz

Rated current: Max.15mA



Zones 1&2; 21&22

CONTROL SWITCHES



BK8050

- ◆ Number of pole: 2P, 3P, 4P, 6P.
- ◆ Available in latching and spring-return forms.

Explosion protection

Global (IECEX)

Ex d e IIC Gb

Europe (ATEX)

Ex II 2 G Ex d e IIC Gb

Certificates: IECEX; ATEX; CU-TR

Enclosure material: Plastic

Rated voltage: Max. 415V AC

Rated current: 16A



Zones 1&2; 21&22

EXPLOSION-PROOF AMMETERS / VOLTMETERS



BB8050

- ◆ Fast comparison of measured with set values.
- ◆ Versions available
 - Ammeter (type 72)
 - Voltmeter (type 72)

Explosion protection

Ammeter

Global (IECEX)

Ex e IIC Gb

Europe (ATEX)

Ex II 2 G Ex e IIC Gb

Voltmeter

Global (IECEX)

Ex e IIC Gb

Europe (ATEX)

Ex II 2 G Ex e IIC Gb

Certificates: IECEX; ATEX; CU-TR

Enclosure material: Flame retardant plastic

Insulation voltage: 690V AC

Frequency: 50/60Hz

DC available



Zones 1&2; 21&22

EXPLOSION-PROOF MOTOR SWITCHES



BLK

- ◆ Classified as IIB according to gas atmosphere.
- ◆ Built-in MCB (miniature circuit breaker), MCCB (moulded case circuit breaker).
- ◆ Earth leakage protection device is optional.

Zones 1&2; 21&22

Explosion protection

Global (IECEX)

Ex db IIB T6 Gb

Ex tb IIIC T80°C Db

Europe (ATEX)

Ex II 2 G Ex db IIB T6 Gb

Ex II 2 D Ex tb IIIC T80°C Db

Certificates: IECEX; ATEX; CU-TR

Enclosure material:

Copper-free Aluminium Alloy, powder coated surface

Rated voltage:

Max. working voltage: 690V AC 50Hz/60Hz; 500V DC

Rated current: Max. 250A

Degree of protection: IP66



EXPLOSION-PROOF MOTOR SWITCHES



BLK

- ◆ Classified as IIC according to gas atmosphere.
- ◆ Built-in MCB (miniature circuit breaker), MCCB (moulded case circuit breaker).
- ◆ Earth leakage protection device is optional.

Zones 1&2; 21&22

Explosion protection

Global (IECEX)

Ex db IIC T6 Gb

Ex tb IIIC T80°C Db IP66

Europe (ATEX)

Ex II 2 G Ex db IIC T6 Gb

Ex II 2 D Ex tb IIIC T80°C Db IP66

Certificates: IECEX; ATEX; CU-TR

Enclosure material:

Copper-free Aluminium Alloy, powder coated surface

Exposed fastener: Stainless steel

Rated voltage:

Max. working voltage: 690V AC 50Hz/60Hz; 500V DC

Rated current: Max. 250A

Degree of protection: IP66



EXPLOSION-PROOF MOTOR STARTERS



BQD

- ◆ Classified as IIB according to gas atmosphere.
- ◆ Different motor starters.

Zones 1&2; 21&22

Explosion protection

Global (IECEX)

Ex db IIB T6 or T5 Gb

Ex tb IIIC T80°C or T95°C Db

Europe (ATEX)

Ex II 2 G Ex db IIB T6 or T5 Gb

Ex II 2 D Ex tb IIIC T80°C or T95°C Db

Certificates: IECEX; ATEX

Enclosure material:

Copper-free Aluminium Alloy, powder coated surface

Exposed fastener: Stainless steel

Rated voltage: 380/400V AC 50/60Hz

Degree of protection: IP66



EXPLOSION-PROOF MOTOR STARTERS



BQD

- ◆ Classified as IIC according to gas atmosphere.
- ◆ Different motor starters.

Zones 1&2

Explosion protection

Global (IECEX)

Ex d e IIC T6 Gb

Europe (ATEX)

Ex II 2 G Ex d e IIC T6

Certificates: IECEX; ATEX

Enclosure material:

Copper-free Aluminium Alloy, powder coated surface

Exposed fastener: Stainless steel

Rated voltage: 380/400V AC 50/60Hz

Degree of protection: IP66



EXPLOSION-PROOF ILLUMINATION (POWER) DISTRIBUTION BOXES



BXM(D)51

- ◆ Enclosure for modular combination (Ex d & Ex e).
- ◆ Main switch and branch switch are operated with external rotary actuator.
- ◆ Internal wiring to the terminal is finished.
- ◆ International brand of explosion-proof terminal blocks.
- ◆ Special requirements on request.

Explosion protection

Global (IECEX)

Ex d e IIB T6

Europe (ATEX)

Ex II 2 G Ex d e IIB T6

Certificates: IECEX; ATEX

Enclosure:

Enclosure material: Copper-free Aluminium Alloy, powder coated surface

Enclosure type: Modular combination (Ex d & Ex e); MCB, MCCB or other components in Ex d compartment, explosion-proof indicators and terminals in Ex e compartment.

Exposed fastener: Stainless steel

General power supply:

Rated voltage: max. 415V AC 50/60Hz;

Rated current: max. 250A

Branch current: Max. 63A

Degree of protection: IP65



Zones 1&2; 21&22

EXPLOSION-PROOF ILLUMINATION (POWER) DISTRIBUTION BOXES



BXM(D)53

- ◆ Enclosure for modular combination (Ex d & Ex e).
- ◆ Main switch and branch switch are operated with external rotary actuator.
- ◆ Internal wiring to the terminal is finished.
- ◆ International brand of explosion-proof terminal blocks.
- ◆ Special requirements on request.

Explosion protection

Global (IECEX)

Ex db eb IIC T6 Gb

Ex tb IIIC T80°C Db IP66

Europe (ATEX)

Ex II 2 G Ex db eb IIC T6 Gb

Ex II 2 D Ex tb IIIC T80°C Db IP66

Certificates: IECEX; ATEX; CU-TR

Enclosure:

Enclosure material: Copper-free Aluminium Alloy, powder coated surface

Enclosure type: Modular combination (Ex d & Ex e); MCB, MCCB or other components in Ex d compartment, explosion-proof indicators and terminals in Ex e compartment.

Exposed fastener: Stainless steel

General power supply:

Rated voltage: max. 690V AC 50/60Hz;

Rated current: max. 200A

Branch current: Max. 63A

Degree of protection: IP66



Zones 1&2; 21&22

EXPLOSION-PROOF ILLUMINATION (POWER) DISTRIBUTION BOXES



BXM(D)81

- ◆ Flameproof enclosure (Ex d IIB).
- ◆ Main switch and branch switch are operated with external rotary actuator.
- ◆ Internal wiring to the terminal is finished.
- ◆ International brand of terminal blocks.
- ◆ Special requirements on request.

Explosion protection

Global (IECEX)

Ex db IIB+H₂ T6 Gb

Ex tb IIIC T80°C Db IP66

Europe (ATEX)

Ex II 2 G Ex db IIB+H₂ T6 Gb

Ex II 2 D Ex tb IIIC T80°C Db IP66

Certificates: IECEX; ATEX; CU-TR

Enclosure material:

Copper-free Aluminium Alloy (carbon steel), powder coated surface, or stainless steel

Exposed fastener: Stainless steel

General power supply:

Rated voltage: max. 690V AC 50/60Hz;

Rated current: max. 630A

Rated current: Max. 400A

Degree of protection: IP66, IP67(optional)



Zones 1&2; 21&22

EXPLOSION-PROOF DISTRIBUTION PANELS



HRMD91

- ◆ Equipped with specialized hinge structure, which can prevent the flameproof joints from damage when opening and closing the box, and greatly prolong the service life of box.
- ◆ The boxes can be combined and installed freely to save space and meet the requirements of various distribution systems.
- ◆ Special requirements on request.

Explosion protection

Global (IECEX)

Ex db IIB+H₂ T□ Gb

Ex db [ib] IIB+H₂ T□ Gb

Ex tb IIIC T□ Db IP66

Europe (ATEX)

Ex II 2 G Ex db IIB+H₂ T□ Gb

Ex II 2 G Ex db [ib] IIB+H₂ T□ Gb

Ex II 2 D Ex tb IIIC T□ Db IP66

Certificates: ATEX and IECEX

Enclosure material: Copper-free Aluminium

Alloy enclosure, powder coated surface

Exposed fastener: Stainless steel

Rated voltage: Max. 1000V AC 50/60Hz

Max. 1500V DC

Rated current: Max. 1200A

Degree of protection: IP66



Zones 1&2; 21&22



Warom can produce distribution box or combined distribution panel according to user's requirements, used in lighting system, power distribution system, motor control, socket, indicator light, switch, meter and electronic equipment used for control and signal can be attached; product is manufactured according to safety standard design and production;

EXPLOSION-PROOF DISTRIBUTION PANELS



HRMD92

- ◆ Equipped with specialized hinge structure, which can prevent the flameproof joints from damage when opening and closing the box, and greatly prolong the service life of box.
- ◆ The boxes can be combined and installed freely to save space and meet the requirements of various distribution systems.
- ◆ Special requirements on request.

Explosion protection

Global (IECEx)(I, II, IIB ... V IIB)
Ex db IIB+H₂ T□ Gb
Ex db [ib] IIB+H₂ T□ Gb
Ex tb IIIC T□ Db IP66
Global (IECEx)(V IIB, V IIBB, IX, IXB)
Ex db IIB T□ Gb
Ex db [ib] IIB T□ Gb
Ex tb IIIC T□ Db IP66
Europe (ATEX)(I, II, IIB ... V IIB)
Ⓔ II 2 G Ex db IIB+H₂ T□ Gb
Ⓔ II 2 G Ex db [ib] IIB+H₂ T□ Gb
Ⓔ II 2 D Ex tb IIIC T□ Db IP66
Europe (ATEX)(V IIB, V IIBB, IX, IXB)
Ⓔ II 2 G Ex db IIB T□ Gb
Ⓔ II 2 G Ex db [ib] IIB T□ Gb
Ⓔ II 2 D Ex tb IIIC T□ Db IP66

Certificates: IECEx; ATEX

Enclosure material: 316 stainless steel

Exposed fastener: Stainless steel

Rated voltage: Max. 1000V AC 50/60Hz
Max. 1500V DC

Rated current: Max. 2000A

Degree of protection: IP66



Zones 1&2; 21&22



Warom can produce distribution box or combined distribution panel according to user's requirements, used in lighting system, power distribution system, motor control, socket, indicator light, switch, meter and electronic equipment used for control and signal can be attached; product is manufactured according to safety standard design and production;

EXPLOSION-PROOF DISTRIBUTION PANELS



HRMD93

- ◆ Enclosure for modular combination (Ex d & Ex e).
- ◆ Main switch and branch switch are operated with external rotary actuator.
- ◆ Internal wiring to the terminal is finished.
- ◆ International brand of explosion-proof terminal blocks.
- ◆ Copper-free Aluminium Alloy, powder coated surface.
- ◆ Special requirements on request.

Zones 1&2; 21&22

Explosion protection

Global (IECEx)(applied for)
Ex db IIB+H₂ T6 Gb
Ex db eb IIB+H₂ T6 Gb
Ex db [ib] IIB+H₂ T6 Gb
Ex db eb [ib] IIB+H₂ T6 Gb
Ex tb IIIC T80°C Db IP66
Europe (ATEX)(applied for)

Ex II 2 G Ex db IIB+H₂ T6 Gb
Ex II 2 G Ex db eb IIB+H₂ T6 Gb
Ex II 2 G Ex db [ib] IIB+H₂ T6 Gb
Ex II 2 G Ex db eb [ib] IIB+H₂ T6 Gb
Ex II 2 D Ex tb IIIC T80°C Db IP66

Certificates: IECEx; ATEX

Enclosure material:

Copper-free Aluminium Alloy, powder coated surface

Enclosure colour: Window grey (RAL7040)

Exposed fastener: Stainless steel

General power supply:

Rated voltage: max. 690V AC 50/60Hz;

Rated current: max. 630A

Branch current: 1A, 2A, 4A, 6A, 10A, 16A, 20A, 25A, 32A, 40A, 50A, 63A, 80A, 100A, 125A, 160A, 200A, 250A, 320A, 400A

Degree of protection: IP66



EXPLOSION-PROOF ILLUMINATION (POWER) DISTRIBUTION BOXES



BXM(D)8050

- ◆ Enclosure for modular combination (Ex e).
- ◆ Main switch and branch switch are operated with external rotary actuator.
- ◆ Internal wiring to the terminal is finished.
- ◆ International brand of explosion-proof terminal blocks.
- ◆ Special requirements on request.

Zones 1&2; 21&22

Explosion protection

Global (IECEx)
Ex d e IIC T5 or T4 Gb
Ex tb IIIC T80°C Db IP66
Europe (ATEX)

Ex II 2 G Ex d e IIC T5 or T4 Gb

Ex II 2 D Ex tb IIIC T80°C Db IP66

Certificates: IECEx; ATEX; CU-TR

Enclosure:

Enclosure material:

GRP (glass fibre-reinforced polyester resin)

Enclosure colour: Black

Enclosure type: Ex e

Exposed fastener: Stainless steel

General power supply:

Rated voltage: max. 690V AC 50/60Hz;

Rated current: max. 250A

Branch current:

1A, 2A, 4A, 6A, 10A, 16A, 20A, 25A, 32A, 40A, 50A, 63A

Degree of protection: IP66



EXPLOSION-PROOF ILLUMINATION (POWER) DISTRIBUTION BOXES



BXM(D)8061

- ◆ Enclosure for modular combination (Ex e).
- ◆ Main switch and branch switch are operated with external rotary actuator.
- ◆ Internal wiring to the terminal is finished.
- ◆ International brand of explosion-proof terminal.
- ◆ Special requirements on request.

Zones 1&2; 21&22

Explosion protection

Global (IECEx)(applied for)
Ex db eb IIC T5 or T4 Gb
Ex tb IIIC T80°C Db IP66
Europe (ATEX)(applied for)

Ex II 2 G Ex db eb IIC T5 or T4 Gb

Ex II 2 D Ex tb IIIC T80°C Db IP66

Certificates: IECEx; ATEX

Enclosure:

Enclosure material: Stainless steel

Enclosure type: Ex e

Exposed fastener: Stainless steel

General power supply:

Rated voltage: max. 690V AC 50/60Hz;

Rated current: max. 250A

Branch current:

1A, 2A, 4A, 6A, 10A, 16A, 20A, 25A, 32A, 40A, 50A, 63A

Degree of protection: IP66



EXPLOSION-PROOF CIRCUIT BREAKER MODULES



BL8060

- ◆ Product of flame-proof structure; the cavity is of engineering plastic embedded with high strength metal frame structure; with strong corrosion-proof capacity and reliable performance.
- ◆ Built-in Schneider iC65 series MCB, special operation mechanism internally designed, reliable overall operation.

Zones 1&2

Explosion protection

Global (IECEx)

Ex d e IIC Gb

Europe (ATEX)

Ⓔ II 2 G Ex d e IIC Gb

Certificates: IECEx; ATEX; INMETRO

Enclosure material:

GRP (glass fibre-reinforced polyester resin)

Rated voltage: Max.690V AC

Branch current:

1A, 2A, 4A, 6A, 10A, 16A, 20A, 25A, 32A, 40A, 50A, 63A



EXPLOSION-PROOF FUSES



BRT8060

Explosion protection

Global (IECEx)(applied for)

Ex eb mb IIC Gb

Europe (ATEX)(applied for)

Ⓔ II 2 G Ex eb mb IIC Gb

Certificates: IECEx and ATEX

Enclosure material: PC

Rated voltage: 230V AC, 400V AC, 500V AC

Branch current: 1A, 2A, 4A, 6A, 8A, 10A, 16A



Zones 1&2

EXPLOSION-PROOF ENCLOSURES



BXT-□-W

- ◆ Flameproof enclosure (Ex d IIB) in copper-free aluminium alloy, formed of low pressure casting.
- ◆ Cable entries can be drilled and components can be installed by user on request.
- ◆ Safety shall be considered when installing components according to related electrical standards.
- ◆ Special requirements on request.

Zones 1&2; 21&22

Explosion protection

Global (IECEx)

Ex db IIB+H₂ Gb

Ex tb IIIC Db IP66

Europe (ATEX)

Ⓔ II 2 G Ex db IIB+H₂ Gb

Ⓔ II 2 D Ex tb IIIC Db IP66

Certificates: IECEx; ATEX

Enclosure material:

Copper-free Aluminium Alloy, powder coated surface

Exposed fastener: Stainless steel

Mounting feet:

Carbon steel, power coated surface

Degree of protection: IP66, IP67(optional)



INCREASED SAFETY ENCLOSURES



BXT-e

- ◆ Copper-free Aluminium Alloy enclosure (Ex e IIC), 8 versions.
- ◆ Cable entries can be drilled and components can be installed by user on request.
- ◆ Safety shall be considered when installing components according to related electrical standards.
- ◆ Special requirements on request.

Zones 1&2; 21&22

Explosion protection

Global (IECEX)

Ex e IIC Gb

Ex tb IIC Db IP66

Europe (ATEX)

Ex II 2 G Ex e IIC Gb

Ex II 2 D Ex tb IIC Db IP66

Certificates: IECEX; ATEX; CU-TR

Enclosure material:

Copper-free Aluminium Alloy, powder coated surface

Exposed fastener: Stainless steel

Degree of protection: IP66



INCREASED SAFETY ENCLOSURES



BXT-S

- ◆ Increased-safety enclosure (Ex e) in stainless steel, 13 versions.
- ◆ Cable entries can be drilled and components can be installed by user on request.
- ◆ Safety shall be considered when installing components according to related electrical standards.
- ◆ Special requirements on request.

Zones 1&2

Explosion protection

Europe (ATEX)

Ex II 2 G Ex e II Gb

Certificates: ATEX

Enclosure material: Stainless steel

Exposed fastener: Stainless steel

Degree of protection: IP66



EXPLOSION-PROOF ENCLOSURES



BXT8050

- ◆ Increased-safety enclosure (Ex e) in GRP; 11 versions.
- ◆ Cable entries can be drilled and components can be installed by user on request.
- ◆ Safety shall be considered when installing components according to related electrical standards.
- ◆ Special requirements on request.

Zones 1&2

Explosion protection

Europe (ATEX)

Ex II 2 G Ex e II

Certificates: ATEX

Enclosure material:

GRP (glass fibre-reinforced polyester resin)

Exposed fastener: Stainless steel

Degree of protection: IP65



EXPLOSION-PROOF WINDOW AIR CONDITIONERS



BKC

- ◆ For explosion-proof window air conditioner, the corresponding product is the cooling-only air conditioner in T1 and T3 group. It is mainly used in high temperature areas, such as Middle East, Middle Africa, Southeast Asia and tropical zone nearby the equator.
- ◆ Explosion-proof window air conditioner is based on renowned brand, by conducting explosion-proof treatment to internal control units compressor, indoor and outdoor fan motors, temperature sensor system, protective system, heat-removal system, cooling system, etc., after which the outline dimensions and installation are the same as the prototype.

Zones 2

Explosion protection

Global (IECEX)
Ex d nC IIB T4 Gc
Europe (ATEX)

Ex II 3 G Ex d nC IIB T4 Gc

Certificates: IECEX; ATEX; CU-TR



EXPLOSION-PROOF WALL AIR CONDITIONERS



BKF

- ◆ For explosion-proof wall air conditioner, both cooling-only and cooling & heating products in T1, T2, and T3 are available, to meet different requirements of low, medium and high temperature zones in the world.

Zones 1&2

Explosion protection

ATEX and CU-TR:

Outdoor unit

BYS Compressor Ex II 3 G Ex nC II 146°C (T3)

BZC Control station Ex II 3 G Ex d IIB

BDJ-W Fan motor Ex II 3 G Ex d IIB

Indoor unit

BDJ-N Fan motor Ex II 2 G Ex d IIB T4

BXK Control station Ex II 2 G Ex d [ib] ib IIB T4

IECEX:

Outdoor unit

Ex d nC IIB 146°C

Indoor unit

Ex d [ib] ib IIB T4

Whole unit

Ex nC d [ib] ib IIB 146°C

Certificates: IECEX; ATEX; CU-TR



EXPLOSION-PROOF WALL AIR CONDITIONERS



BKF(R)

- ◆ For explosion-proof wall air conditioner, both cooling-only and cooling & heating products in T1, T2, and T3 are available, to meet different requirements of low, medium and high temperature zones in the world.

Zones 1&2; 21&22

Explosion protection

Global (IECEX)

Ex d e ib mb px IIC T4 Gb

Ex ibD tb pD IIIC T130°C Db IP66

Europe (ATEX)

Ex II 2 G Ex d e ib mb px IIC T4 Gb

Ex II 2 D Ex ib tb pD IIIC T130°C Db IP66

Certificates: IECEX; ATEX; CU-TR



EXPLOSION-PROOF TANK AIR CONDITIONERS



BKG(R)

- ◆ For explosion-proof wall air conditioner, both cooling-only and cooling & heating products in T1, T2, and T3 are available, to meet different requirements of low, medium and high temperature zones in the world.

Zones 1&2

Explosion protection

Global (IECEX)(applied for)

Ex db eb ib [ib Gb] nC IIB T4 Gc

Ex db eb ib [ib Gb] nC IIC T4 Gc

Europe (ATEX)(applied for)

Ex II 3 (2) G Ex db eb ib [ib Gb] nC IIB T4 Gc

Ex II 3 (2) G Ex db eb ib [ib Gb] nC IIC T4 Gc

Certificates: IECEX; ATEX



EXPLOSION-PROOF PRESSURIZED DISTRIBUTION CABINETS



PXK

- ◆ Explosion-proof types IIB, IIC.
- ◆ Available in types G, X, Q, T, K.
- ◆ Cabinet type product adopts GGD frame; the main cavity and auxiliary cavity are of left and right structure; cable channel is of horizontal installation type; bottom inlet, front operation and back overhauling.
- ◆ Box type product adopts high quality steel plate welding structure; the main cavity and auxiliary cavity are of up and down structure; wall type installation; bottom inlet, front operation and back overhauling.
- ◆ The back doors of cabinet type and piano type are of rapid opening device, convenient for user to install and overhaul.

Explosion protection

Global (IECEX)

Ex Pz IIC Ex pzc IIC T5 Gc

Ex pzc IIC T95°C Dc

Ex Px IIC Ex db eb pxb IIC T4 Gb

Ex pxb tb IIC T130°C Db IP66

Europe (ATEX)

Ex Pz IIC Ex II 3 G Ex pz IIC T5 Gc

Ex II 3 D Ex pD IIC T95°C Dc

Ex Px IIC Ex II 2 G Ex db eb pxb IIC T4 Gb

Ex II 2 D Ex pxb tb IIC T130°C Db IP66

Certificates: IECEX; ATEX

Enclosure material:

Stainless steel or powder coated carbon steel

Rated voltage: Max.1000V AC / 1500V DC

Rated current: Max.630A

Degree of protection: IP66



Zones 1&2; 21&22

EXPLOSION-PROOF ENGINEERING CABINS



PXB

- ◆ Enclosure in carbon steel or stainless steel.
- ◆ The explosion-proof control box is the standard control box or PLC programmed control box. Combustible gas detector and toxic gas detector are modular designed. The thermal detector, smoking detector, and pressure transmitter are intrinsic safety explosion-proof components. The power of explosion-proof centrifugal fan is subject to the room size. The type of explosion-proof air conditioner is subject to the room size. With audio and visual alarm interlock system. Illumination system is the explosion-proof fluorescent lamp. The light source of explosion-proof emergency lamp is LED.

Explosion protection

Global (IECEX)

Ex px IIB T4 Gb

Ex px IIC T130°C Db

Europe (ATEX)(applied for)

Ex II 2 G Ex px IIB T4 Gb

Ex II 2 D Ex px IIC T130°C Db

Certificates: IECEX; ATEX

Enclosure material:

Powder coated carbon steel or stainless steel

Rated voltage of user system:

220V/380V/400V/440V/460V/660V/690V AC

Rated voltage of pressurized control system:

220V/380V AC 50/60Hz

Rated current of pressurized control system:

10A

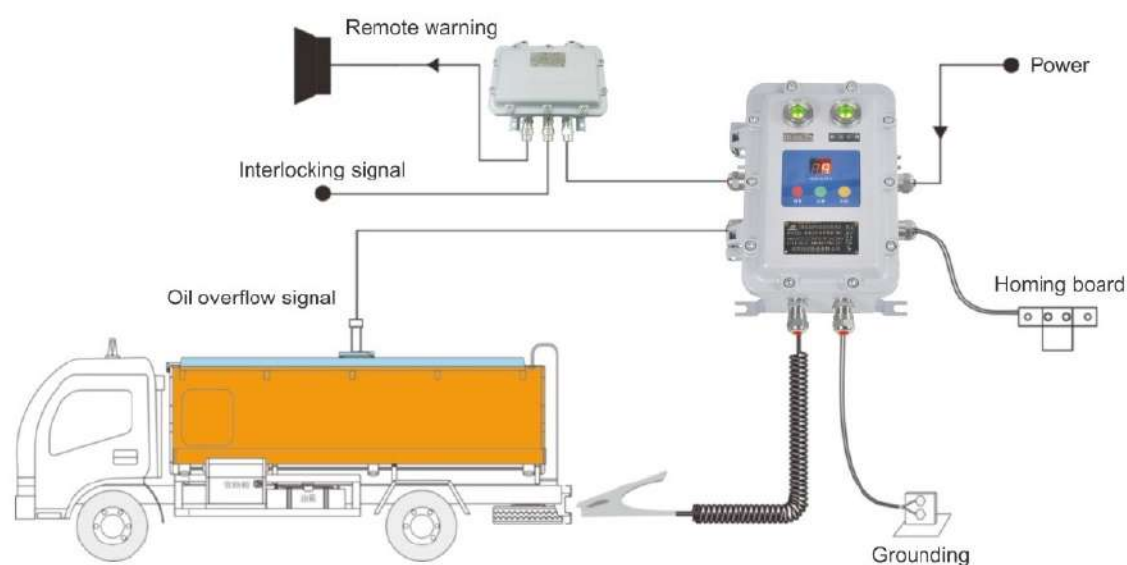
Degree of protection: IP66



Zones 1&2; 21&22

**EXPLOSION-PROOF
OVERFLOW STATIC GROUNDING
CONTROL SYSTEM
(VOICE PROMPT FUNCTION)**

BXCQ-YJC/(II)

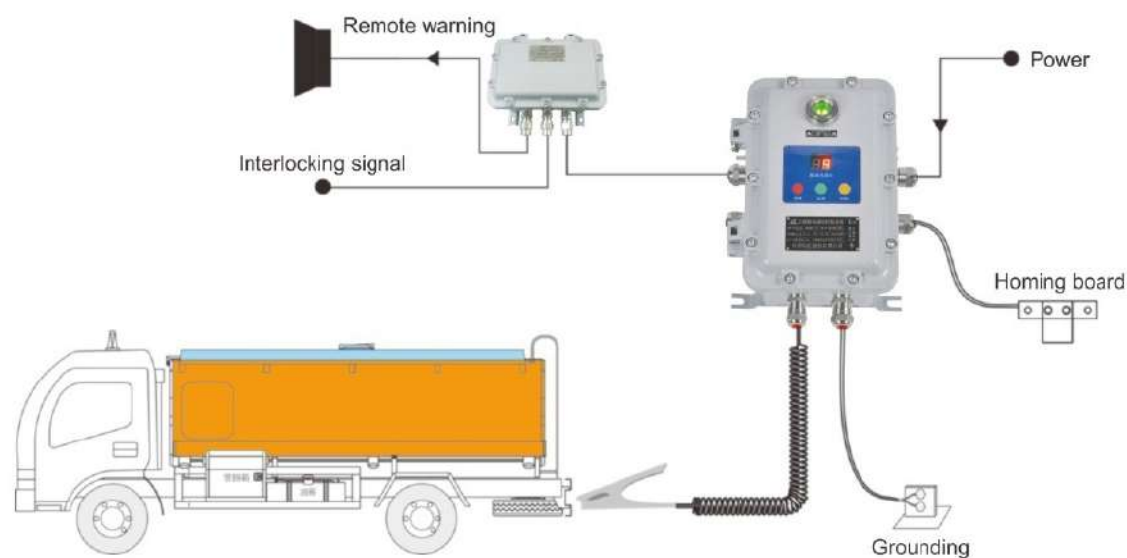


Zones 1&2; 21&22



**EXPLOSION-PROOF
STATIC GROUNDING
CONTROL SYSTEM**

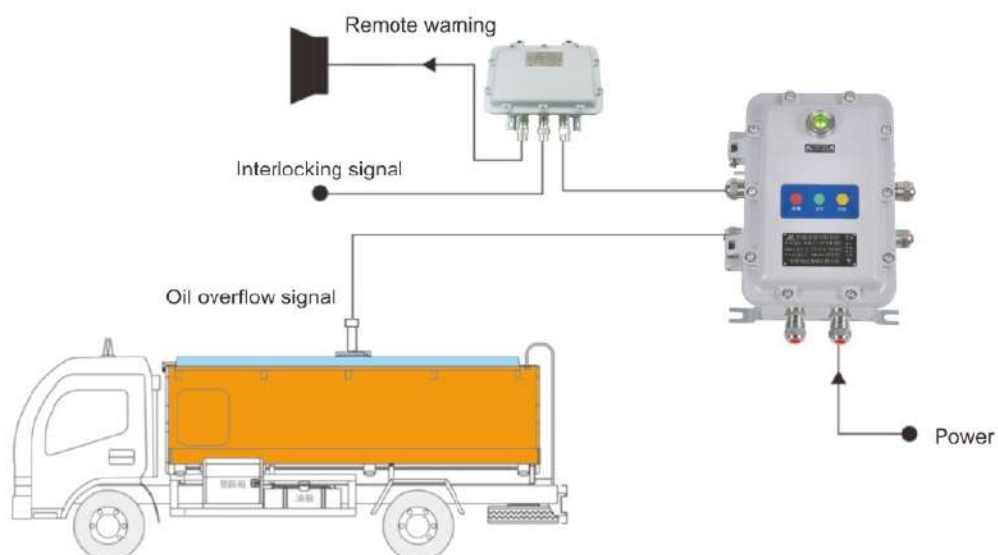
BXCQ-JC



Zones 1&2; 21&22

EXPLOSION-PROOF
OVERFLOW
CONTROL SYSTEM

BXCQ-YC

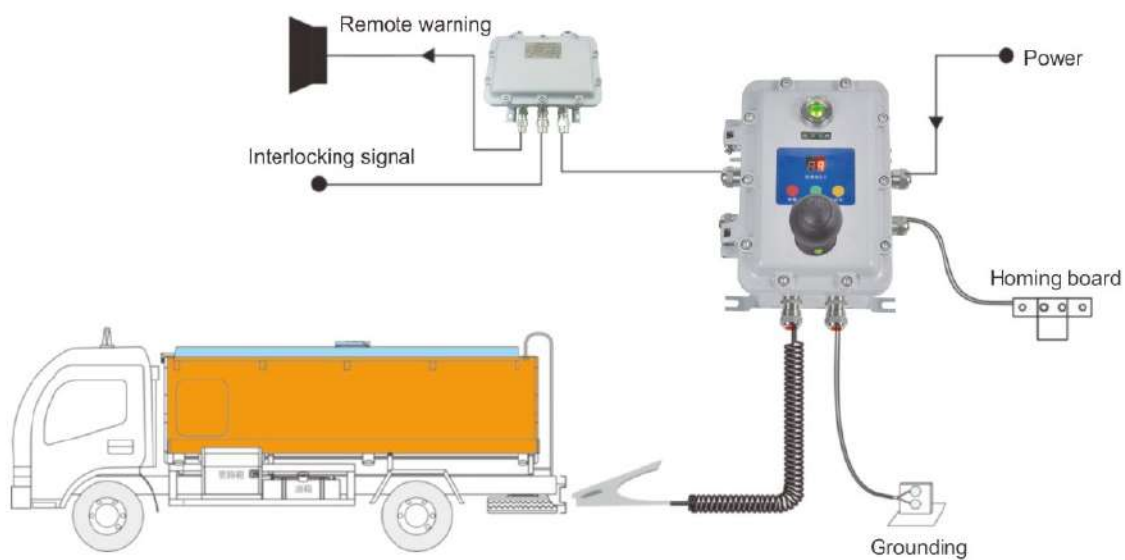


Zones 1&2; 21&22



EXPLOSION-PROOF
STATIC GROUNDING
CONTROL SYSTEM
(DUAL PURPOSES OF MAN AND MOTOR)

BXCQ-JCL



Zones 1&2; 21&22

EXPLOSION-PROOF OVERFLOW STATIC GROUNDING CONTROLLER



BXCQ-YJC

- ◆ Aluminium alloy enclosure

Explosion protection

Ⓔ II 2 G Ex db [ia] IIB+H₂ T6 Gb
 Ⓔ II 2 D Ex tb IIIC T80°C Db IP66
 Protection degree: IP66
 Response time: <1S
 Test resistance: <10Ω
 Working voltage: 220VAC or 24VDC
 Working current: <20mA
 Warning method: Interlocking signal and three
 color light instruction
 Output signal: Relay output, NO NC is optional,
 10A 30VDC or 10A 250VAC



Zones 1&2; 21&22

EXPLOSION-PROOF STATIC GROUNDING CONTROLLER



BXCQ-JC

- ◆ Aluminium alloy enclosure

Explosion protection

Ⓔ II 2 G Ex db [ia] IIB+H₂ T6 Gb
 Ⓔ II 2 D Ex tb IIIC T80°C Db IP66
 Protection degree: IP66
 Response time: <1S
 Test resistance: <10Ω
 Working voltage: 220VAC or 24VDC
 Working current: <20mA
 Warning method: sound and light alarm (optional)
 Output signal: Relay output, NO NC is optional,
 10A 30VDC or 10A 250VAC



Zones 1&2; 21&22

EXPLOSION-PROOF OVERFLOW CONTROLLER



BXCQ-YC

- ◆ Aluminium alloy enclosure

Explosion protection

Ⓔ II 2 G Ex db [ia] IIB+H₂ T6 Gb
 Ⓔ II 2 D Ex tb IIIC T80°C Db IP66
 Protection degree: IP66
 Response time: <1S
 Working voltage: 220VAC or 24VDC
 Working current: <20mA
 Warning method: Interlocking signal and three
 color light instruction
 Output signal: Relay output, NO NC is optional,
 10A 30VDC or 10A 250VAC



Zones 1&2; 21&22

EXPLOSION-PROOF STATIC GROUNDING CONTROLLER (DUAL PURPOSES OF MANAND MOTOR)



BXCQ-JCL

- ◆ Aluminium alloy enclosure

Explosion protection

Ⓔ II 2 G Ex db [ia] IIB+H₂ T6 Gb
 Ⓔ II 2 D Ex tb IIIC T80°C Db IP66
 Protection degree: IP66
 Response time: <1S
 Test resistance: <10Ω
 Working voltage: 220VAC or 24VDC
 Working current: <20mA
 Warning method: sound and light alarm (optional)
 Output signal: Relay output, NO NC is optional,
 10A 30VDC or 10A 250VAC
 Touching ball material: Electrostatic subconductor
 Touching ball diameter: 90mm



Zones 1&2; 21&22

EXPLOSION-PROOF JUNCTION BOX



BXJ-IIB

- ◆ Aluminium alloy enclosure

Zones 1&2; 21&22

Explosion protection

Ex II 2 G Ex db IIB+H₂ T6 Gb

Ex II 2 D Ex tb IIIC T80°C Db IP66

Protection degree: IP66

STATIC GROUNDING CLAMP



Clamp tooth material: Tungsten alloy

Opening range:

Clamp body material: 304 (316 optional)

CORROSION RESISTANCE HELICAL LINE



- ◆ The length of helical Line is customized, the max length is 15m

Cable material: Copper wire

Surface material: PU

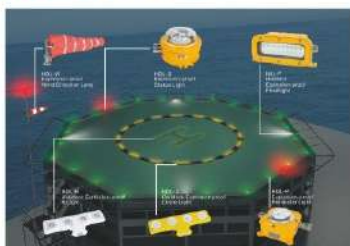
Standard equipment length: 7m

HOMING BOARD



Material: 304 stainless steel

HELICOPTER LANDING PLATFORM AID SYSTEM



- ◆ Widely used for landing aid signal on helideck of marine engineering oil and gas drilling platforms and ships etc. hazardous area.
- ◆ Can reliably work in severe environment where is easily affected by moisture, vibration, or corrosion.

Zones 1&2; 21&22

Executive Standard

- ◆ Comply with CAP 437 ICAO Annex 14, IMO standard requirements.
- ◆ Comply with IEC60079, EN60079, GB3836, GB12476, standards.

System Features

- ◆ High-performance explosion-proof security
- ◆ Long-life LED light source > 100000h
- ◆ High degree of protection: IP66 / IP67
- ◆ High anti-corrosion design, adapt to the marine environment
- ◆ Temperature: -40℃ ~ +55℃

HELIDECK EXPLOSION-PROOF H LIGHT



HDL-H

- ◆ Enclosure uses high quality maritime aluminium alloy, which is applied to the ocean environment.
- ◆ LED green light source, service life is up to 100000 hours.
- ◆ Standard light and bright light of light fittings can be switched through controlling the system and the dimming instruction of light fittings.
- ◆ Professional optics software designed secondary light distribution system, conform to CAP437 standard requirements.
- ◆ Total height is less than 25mm, protection degree is higher to IP66/IP67/IP69.

Zones 1&2; 21&22

Explosion protection

- Ex II 2 G Ex db eb IIC T6 Gb
- Ex II 2 D Ex tb IIIC T80℃ Db IP66/IP67



HELIDECK EXPLOSION-PROOF CIRCLE LIGHT



HDL-C

- ◆ Enclosure uses high quality maritime aluminium alloy, which is applied to the ocean environment.
- ◆ LED yellow light source, service life is up to 100000 hours.
- ◆ Standard light and bright light of light fittings can be switched through controlling the system and the dimming instruction of light fittings.
- ◆ Professional optics software designed secondary light distribution system, conform to CAP437 standard requirements.
- ◆ Total height is less than 25mm, protection degree is higher to IP66/IP67/IP69.

Zones 1&2; 21&22

Explosion protection

- Ex II 2 G Ex db eb IIC T6 Gb
- Ex II 2 D Ex tb IIIC T80℃ Db IP66/IP67

EXPLOSION-PROOF PERIMETER LIGHT



HDL-P

- ◆ Enclosure is precision casting by 316 stainless steel, powder coated on surface after finish machining, strong corrosion resistance.
- ◆ LED green light source, service life is up to 100000 hours.
- ◆ Professional optics software designed secondary light distribution system, conform to CAP437 standard requirements.
- ◆ Total height is less than 100mm, protection degree is higher to IP66/IP67.

Zones 1&2; 21&22

Explosion protection

- Ex II 2 G Ex db eb IIC T6 Gb
- Ex II 2 D Ex tb IIIC T80℃ Db IP66/IP67



HELIDECK EXPLOSION-PROOF FLOODLIGHT



HDL-F

- ◆ Enclosure uses maritime aluminium alloy, powder coated on surface after preservative treatment.
- ◆ LED white light source, service life is up to 100000 hours.
- ◆ In-built constant voltage constant current driving power, wide voltage input, constant power output, fast start, stable performance, surge resistance, overcurrent, open circuit, short circuit, etc. protection function.
- ◆ Total height is less than 135mm, protection degree is higher to IP66/IP67.

Zones 1&2; 21&22

Explosion protection

- Ⓔ II 2 G Ex db eb mb op is IIC T5 or T4 Gb
- Ⓔ II 2 D Ex op is tb IIIC T95°C or T130°C Db IP66/IP67



EXPLOSION-PROOF STATUS LIGHT



HDL-S

- ◆ Enclosure uses maritime aluminium alloy, powder coated on surface after preservative treatment.
- ◆ Professional optics software designed secondary light distribution system, conform to CAP437 standard requirements.
- ◆ Through the control system, status instructions are given to the lamps. The red LED light source flashes and gives warning signals.
- ◆ Total height is less than 100mm, protection degree is higher to IP66/IP67.

Zones 1&2; 21&22

Explosion protection

- Ⓔ II 2 G Ex db eb op is IIC T6 Gb
- Ⓔ II 2 D Ex tb op is IIIC T80°C Db IP66



EXPLOSION-PROOF WIND DIRECTION LAMP



HDL-W

- ◆ Enclosure uses maritime aluminium alloy, powder coated on surface after preservative treatment.
- ◆ Professional optics software designed secondary light distribution system, conform to CAP437 standard requirements.
- ◆ Through the control system, status instructions are given to the lamps. The red LED light source flashes and gives warning signals.
- ◆ Total height is less than 100mm, protection degree is higher to IP66/IP67.

Zones 1&2; 21&22

Explosion protection

- Ⓔ II 2 G Ex db eb op is IIC T6 Gb
- Ⓔ II 2 D Ex tb op is IIIC T80°C Db IP66



EXPLOSION-PROOF DISTRIBUTION PANELS



HRMD91

- ◆ Copper-free Aluminium Alloy enclosure, powder coated surface.
- ◆ Equipped with specialized hinge structure, which can prevent the flameproof joints from damage when opening and closing the box, and greatly prolong the service life of box.
- ◆ The boxes can be combined and installed freely to save space and meet the requirements of various distribution systems.
- ◆ Special requirements on request.

Zones 1&2; 21&22

Explosion protection

- Ⓔ II 2 G Ex db IIB+H₂ T6 Gb
- Ⓔ II 2 G Ex tb IIIC T80°C Db IP66



EXPLOSION-PROOF ALUMINIUM ALLOY BUSHINGS



BHC

- ◆ Ex e enclosure.
- ◆ Widely used for connection in steel pipe wiring system.

Zones 1&2; 21&22

Explosion protection

Global (IECEx)

Ex eb IIC Gb

Ex tb IIIC Db

Europe (ATEX)

Ex II 2 G Ex eb IIC Gb

Ex II 2 D Ex tb IIIC Db

Certificates: IECEX; ATEX; CU-TR

Enclosure material:

Copper-free Aluminium Alloy, powder coated surface

Type: A, B, C, D, E, F, G, H

Connection thread: M20-M63

NPT1/2"-NPT2"

G1/2"-G2"

Degree of protection: IP66



EXPLOSION-PROOF CAST IRON BUSHINGS



BHC

- ◆ Ex e enclosure.
- ◆ Widely used for connection in steel pipe wiring system.

Zones 1&2; 21&22

Explosion protection

Global (IECEx)

Ex eb IIC Gb

Ex tb IIIC Db

Europe (ATEX)

Ex II 2 G Ex eb IIC Gb

Ex II 2 D Ex tb IIIC Db

Certificates: IECEX; ATEX; CU-TR

Enclosure material:

Cast iron, powder coated surface

Type: A, B, C, D, E, F, G, H

Connection thread: M20-M63

NPT1/2"-NPT2"

G1/2"-G2"

Degree of protection: IP66



EXPLOSION-PROOF CONNECTORS



BGJ

- ◆ Available in nickel plated brass, stainless steel or galvanized carbon steel.

Zones 1&2; 21&22

Explosion protection

Global (IECEx)

Ex db IIC Gb

Ex eb IIC Gb

Ex tb IIIC Db

Europe (ATEX)

Ex II 2 G Ex db IIC Gb

Ex II 2 G Ex eb IIC Gb

Ex II 2 D Ex tb IIIC Db IP66

Certificates: IECEX; ATEX; CU-TR

Material: Nickel plated brass, stainless steel or galvanized carbon steel

Type: F/F, M/F or M/M

Connection thread: M20-M115

NPT1/2"-NPT4"

G1/2"-G4"

Degree of protection: IP66



EXPLOSION-PROOF SEAL BUSHINGS



BAG

- ◆ Widely used for isolating seal between pipes or pipes and explosion-proof enclosures.

Zones 1&2; 21&22

Explosion protection

Global (IECEX)

Ex db IIC Gb

Ex eb IIC Gb

Ex tb IIC Db IP66

Europe (ATEX)

Ex II 2 G Ex db IIC Gb

Ex II 2 G Ex eb IIC Gb

Ex II 2 D Ex tb IIC Db IP66

Certificates: IECEX; ATEX; CU-TR

Enclosure material:

Copper-free Aluminium Alloy, powder coated surface

Type: Type Z, Type H, Type P

Connection thread: M20-M63

NPT1/2"-NPT2"

G1/2"-G2"

Degree of protection: IP66



EXPLOSION-PROOF CABLE GLANDS PLASTIC UNARMORED



DQM-I

- ◆ Ex e structure.
- ◆ Single seal, suitable for unarmored cable.

Zones 1&2

Explosion protection

Global (IECEX)

Ex e II

Europe (ATEX)

Ex II 2 G Ex e IIC Gb

Certificates: IECEX; ATEX; CU-TR

Gland material: Plastic, black

Connection thread: M16-M63

G3/4"

Degree of protection: IP65

EXPLOSION-PROOF CABLE GLANDS METAL UNARMORED



DQM-I

- ◆ Ex e structure.
- ◆ Single seal, suitable for unarmored cable.

Zones 1&2; 21&22

Explosion protection

Global (IECEX)

Ex eb IIC Gb

Ex tb IIC Db IP66 / IP67

Europe (ATEX)

Ex II 2 G Ex e IIC Gb

Ex II 2 D Ex tb IIC Db IP66 / IP67

Certificates: IECEX; ATEX; CU-TR

Gland material:

Stainless steel or nickel plated brass

Connection thread: M20-M75

NPT1/2"-NPT2 1/2"

G1/2"-G2 1/2"

Degree of protection: IP66/IP67



EXPLOSION-PROOF CABLE GLANDS METAL ARMORED



Cable wiring



Steel pipe wiring

DQM-I

- ◆ Ex e structure.
- ◆ Single seal, suitable for both armored and unarmored cable.
- ◆ EMC Cable Gland. (360° contact) - EMC tested.

Explosion protection

Global (IECEX)

Ex eb IIC Gb

Ex tb IIIC Db IP66 / IP67

Europe (ATEX)

Ex II 2 G Ex e IIC Gb

Ex II 2 D Ex tb IIIC Db IP66 / IP67

Certificates: IECEX; ATEX; CU-TR

Gland material:

Stainless steel or nickel plated brass

Connection thread: M20-M115

NPT1/2"-NPT4"

G1/2"-G4"

Degree of protection: IP66/IP67



Zones 1&2; 21&22



EXPLOSION-PROOF CABLE GLANDS UNARMORED SINGLE SEAL



Cable wiring



Steel pipe wiring

DQM-II

- ◆ Ex d, Ex e structure.
- ◆ Single seal, suitable for unarmored cable.

Explosion protection

Global (IECEX)

Ex d IIC Gb

Ex e IIC Gb

Ex tb IIIC Db IP66

Europe (ATEX)

Ex II 2 G Ex d IIC Gb

Ex II 2 G Ex e IIC Gb

Ex II 2 D Ex tb IIIC Db IP66

Certificates: IECEX; ATEX; CU-TR

Gland material:

Stainless steel or nickel plated brass

Connection thread: M20-M115

NPT1/2"-NPT4"

G1/2"-G4"

Degree of protection: IP66 (IP67 optional)



Zones 1&2; 21&22



EXPLOSION-PROOF CABLE GLANDS ARMORED DUAL SEAL



Cable wiring



Steel pipe wiring

DQM-II

- ◆ Ex d, Ex e structure.
- ◆ Dual seal, suitable for both armored and unarmored cable.
- ◆ EMC Cable Gland. (360° contact) - EMC tested.
- ◆ For particular use with: cables that exhibit "cold flow" characteristics.

Explosion protection

Global (IECEX)

Ex d IIC Gb

Ex e IIC Gb

Ex tb IIIC Db IP66

Europe (ATEX)

Ex II 2 G Ex d IIC Gb

Ex II 2 G Ex e IIC Gb

Ex II 2 D Ex tb IIIC Db IP66

Certificates: IECEX; ATEX; CU-TR

Gland material:

Stainless steel or nickel plated brass

Connection thread: M20-M115

NPT1/2"-NPT4"

G1/2"-G4"

Degree of protection: IP66 (IP67 optional)



Zones 1&2; 21&22

EXPLOSION-PROOF CABLE GLANDS ARMORED DUAL SEAL



Cable wiring



Steel pipe wiring



DQM-II

- ◆ Ex d, Ex e structure.
- ◆ Dual seal, suitable for both armored and unarmored cable.
- ◆ EMC Cable Gland. (360° contact) - EMC tested.
- ◆ Provides a seal and an electrical bond on the cables lead inner sheath.

Zones 1&2; 21&22

Explosion protection

Global (IECEX)

Ex d IIC Gb

Ex e IIC Gb

Ex tb IIC Db IP66

Europe (ATEX)

Ex II 2 G Ex d IIC Gb

Ex II 2 G Ex e IIC Gb

Ex II 2 D Ex tb IIC Db IP66

Certificates: IECEX; ATEX; CU-TR

Gland material:

Stainless steel or nickel plated brass

Connection thread: M20-M115

NPT1/2"-NPT4"

G1/2"-G4"

Degree of protection: IP66 (IP67 optional)



EXPLOSION-PROOF CABLE GLANDS UNARMORED COMPOUND BARRIER



Cable wiring



Steel pipe wiring



DQM-III

- ◆ Ex d, Ex e structure.
- ◆ With sealing and sealing compound; suitable for unarmored cable.
- ◆ For particular use with: cables that exhibit "cold flow" characteristics.

Zones 1&2; 21&22

Explosion protection

Global (IECEX)

Ex d IIC Gb

Ex e IIC Gb

Ex tb IIC Db IP66

Europe (ATEX)

Ex II 2 G Ex d IIC Gb

Ex II 2 G Ex e IIC Gb

Ex II 2 D Ex tb IIC Db IP66

Certificates: IECEX; ATEX; CU-TR

Gland material:

Stainless steel or nickel plated brass

Connection thread: M20-M115

NPT1/2"-NPT4"

G1/2"-G4"

Degree of protection: IP66 (IP67 optional)



EXPLOSION-PROOF CABLE GLANDS ARMORED COMPOUND BARRIER



Cable wiring



Steel pipe wiring



DQM-III

- ◆ Ex d, Ex e structure.
- ◆ With sealing ring and sealing compound; suitable for armored cable.
- ◆ For particular use with: cables that exhibit "cold flow" characteristics.
- ◆ EMC Cable Gland. (360° contact) - EMC tested.

Zones 1&2; 21&22

Explosion protection

Global (IECEX)

Ex d IIC Gb

Ex e IIC Gb

Ex tb IIC Db IP66

Europe (ATEX)

Ex II 2 G Ex d IIC Gb

Ex II 2 G Ex e IIC Gb

Ex II 2 D Ex tb IIC Db IP66

Certificates: IECEX; ATEX; CU-TR

Gland material:

Stainless steel or nickel plated brass

Connection thread: M20-M115

NPT1/2"-NPT4"

G1/2"-G4"

Degree of protection: IP66 (IP67 optional)

EXPLOSION-PROOF CABLE GLANDS ARMORED DUAL SEAL



Cable wiring



Steel pipe wiring

DQM-CF

- ◆ Ex d, Ex e structure.
- ◆ Dual seal, suitable for both armored and unarmored cable.
- ◆ EMC Cable Gland. (360° contact) - EMC tested.
- ◆ For particular use with: cables that exhibit "cold flow" characteristics.

Explosion protection

Global (IECEX)
Ex db IIC Gb (only for M and NPT thread)
Ex eb IIC Gb
Ex tb IIIC Db
Europe (ATEX)
Ex II 2 G Ex db IIC Gb (only for M and NPT thread)
Ex II 2 G Ex eb IIC Gb
Ex II 2 D Ex tb IIIC Db

Certificates: IECEX; ATEX

Gland material:

Stainless steel or nickel plated brass

Connection thread: M20-M63

NPT1/2"-NPT2"

G1/2"-G2"

Degree of protection: IP66



Zones 1&2; 21&22



EXPLOSION-PROOF FLEXIBLE CONDUITS



BNG

- ◆ Ex d structure.
- ◆ Application:
 - Widely used for flexible connection between explosion-proof boxes or explosion-proof light fittings and pipes
 - Protect cable from any damage
 - Highly corrosion-proof

Explosion protection

Global (IECEX)
Ex d IIC Gb
Ex tD A21 IP66
Europe (ATEX)
Ex II 2 G Ex d IIC Gb
Ex II 2 D Ex tD A21 IP66

Certificates: IECEX; ATEX; CU-TR

Material:

Stainless steel body; connectors at both ends in stainless steel

Type: F/F, M/F or M/M

Connection thread: M20-M63

NPT1/2"-NPT2"

G1/2"-G2"

Degree of protection: IP66



Zones 1&2; 21&22



EXPLOSION-PROOF DRAIN PLUG



BPS(H)

Explosion protection:

Global (IECEX)
Ex d IIC Gb
Europe (ATEX)
Ex II 2 G Ex d IIC Gb

Certificates: ATEX; IECEX

Material: SS316

Specification: M20×1.5



STOPPING PLUG



BPT-e

Zones 1&2; 21&22

Explosion protection:

Global (IECEX)

Ex e IIC Gb

Ex tb IIC Db IP66

Europe (ATEX)

Ex II 2 G Ex eb IIC Gb

Ex II 2 D Ex tb IIC Db

Certificates:

ATEX; IECEX

Material: PA66(Polyamide)

Specification: M16-M63

STOPPING PLUG



BPT

- ◆ Metric thread is standard type.
- ◆ G thread or NPT thread is optional.
- ◆ To be used at spare entries of explosion-proof equipment, corrosion-proof and waterproof.
- ◆ Supplied with seal gasket (not applicable for NPT thread).

Zones 1&2; 21&22

Explosion protection:

Global (IECEX)

Ex db IIC Gb

Ex e IIC Gb

Ex tb IIC Db IP66

Europe (ATEX)

Ex II 2 G Ex db IIC Gb

Ex II 2 G Ex e IIC Gb

Ex II 2 D Ex tb IIC Db IP66

Certificates: IECEX; ATEX; CU-TR

Material: copper-free aluminium alloy, galvanized carbon steel, nickel plated brass or stainless steel

Specification: M20-M115

INPT1/2"-NPT4"

IG1/2"-G4"

EX e STOPPING ROD



Material: Plastic

Specification: $\phi 8$, $\phi 12$, $\phi 23$, $\phi 32$

LOCKNUT



Material: Galvanized carbon steel, nickel plated brass or stainless steel.

Specification: M20-M115
G1/2"-G4"

SERRATED WASHER



Material: Stainless steel

Specification: M20-M75

SEALING WASHER



Material: Teflon(PTFE)

Specification: M20-M115

SHROUD



Material: Polyvinyl chloride (PVC)

Size Code: A-J

EARTH LUG



Material: Nickel plated brass

Specification: $\phi 20$ - $\phi 115$

CUSTOMER BASE





WAROM TECHNOLOGY INCORPORATED COMPANY

Add: No.555# Baoqian Road, Jiading, Shanghai, PRC

WAROM TECHNOLOGY (MENA) FZCO

Add: No. Plot: S31223, JAFZA South, Jebel Ali Free Zone, Dubai, UAE

Partner in Vietnam

MECOSUN CO., LTD

Add: No.561A, Dien Bien Phu Street, Ward 25, Binh Thanh District, HCMC.

Tel: +84 703 168 009 Email: info@mecosun.vn Tax: 0315332552



Public Account



Official Website